

# shindaiwa®



## Diesel Engine Driven Generator



**YAMABIKO CORPORATION**



# World map of Shindaiwa generators

Proven durability against the harshest weather conditions around the world.



Alaska, USA Field office



USA, Backup of mobile phone base station



Canada, Pump jack



USA, Mining



Canada, road construction



USA, Pipeline construction



Australia, Mining



USA, TV relay station



USA, Construction site



USA, Hospital



USA, Resource mining



Russia, Construction site





# Development of new products that create value

Improved work efficiency with IoT

Responding to changing customer needs with DX (Digital Transformation)



We're ready to offer the solutions you require. Monitor operating status in remote areas in real time, record and accumulate data and receive cell phone notifications of any machine abnormalities.



# Main markets of Shindaiwa generators

Shindaiwa products are known for their dependability around the world. That's because we do not compromise on quality. Meaning you get smooth operation and reliability, day in, day out.







01

Natural resources

Oil & gas  
Mining and Quarries

05

Tele  
com

Logistics

04

03

# Oil & gas

Generators provide key power sources for the oil and gas industry, particularly to assist with drilling and digging. All major oil and gas companies rely on generators extensively. That's why it's important they choose heavy duty, reliable generators that can give their facilities and equipment the power they need to run smoothly and without interruption. Demand for generators as backup power sources has increased in hurricane prone areas.



## Remote Monitoring







**Natural resources**

Oil & gas  
Mining and Quarries

05

Tele  
com

Logistics

04

03

# Mining and quarries

The mining industry depends on generators not just to power equipment such as rock crushers and belt conveyers, but also to power miners' dormitories in remote locations.

Rock crushers demand a generator with proven quality and durability. Breaking down rocks of different sizes creates a wide range of output fluctuation, meaning a generator with expertly crafted output control is a necessity. The procedure also creates a vast amount of dust and debris, meaning durability and resistance against extreme conditions are essential. When your customers absolutely depend on your product for their business and its employees, there can be no 'good enough', Shindaiwa generators are the highest quality possible with no compromises.







**Construction**

Building, Railways, Roads, Dams

## Jobsites in remote areas

Construction of infrastructure such as tunnels, dams and roads in remote areas without power requires generators to run tools and power dormitories and other worker related facilities.



11



**Remote Monitoring**



12





# Jobsites in cities

Generators are also required in built up areas, where portability and sound-attenuated enclosure are important features.







# Rental Market

Shindaiwa generators are robust, durable and easy to maintain. That's why we're the number one brand by a wide margin when it comes to rented assets.

Extended operation at over load is a big concern on jobsites with inexperienced workers. Shindaiwa's overload precaution function prevents the possibility of this.







# Refrigerator truck

Refrigerator trucks, that transport perishable products at low temperatures such as medicine and fresh food, require a generator durable enough to sustain long operation times and frequent vibration.

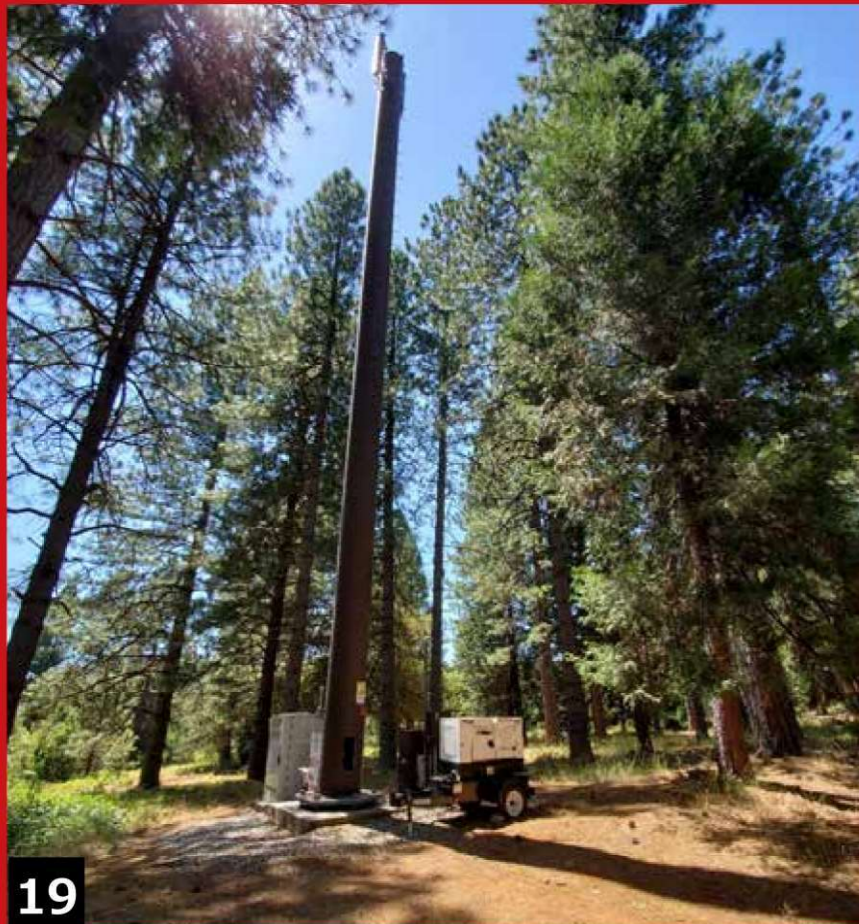






# Backup for remote cell towers

The number of cell towers around the world is increasing rapidly. As towers can be located in areas such as mountains and near the ocean, generators used are subject to a variety of harsh weather conditions, requiring extensive weather-resistant sealing.







## Audio equipment and lighting for outdoor events

Power source to audio and lighting equipment at outdoor events. The industry relies on dependable generators because interruption of the event due to power failure would result in operating loss.

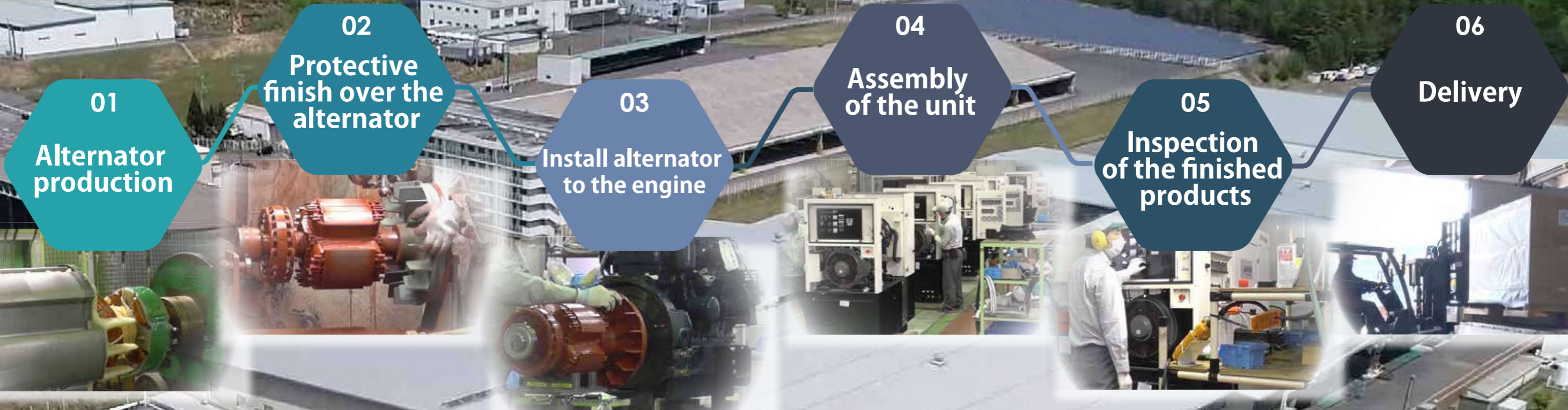
Sound-attenuated enclosure is one of the features sought after in this industry to ensure a quiet and comfortable environment for the audience.





# Integrated Production System

Yamabiko manages the entire production line which yields an increase in value-added products



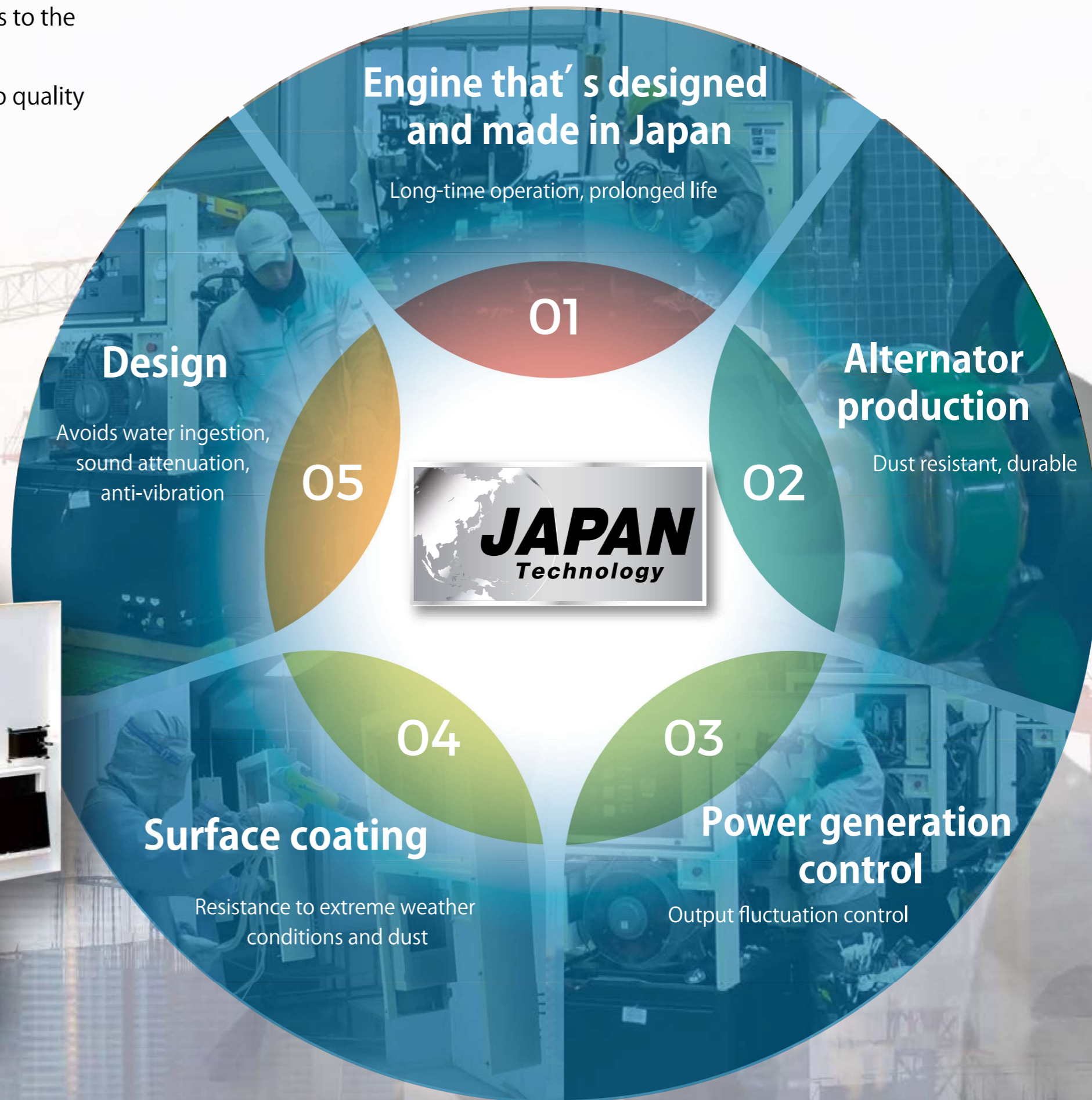
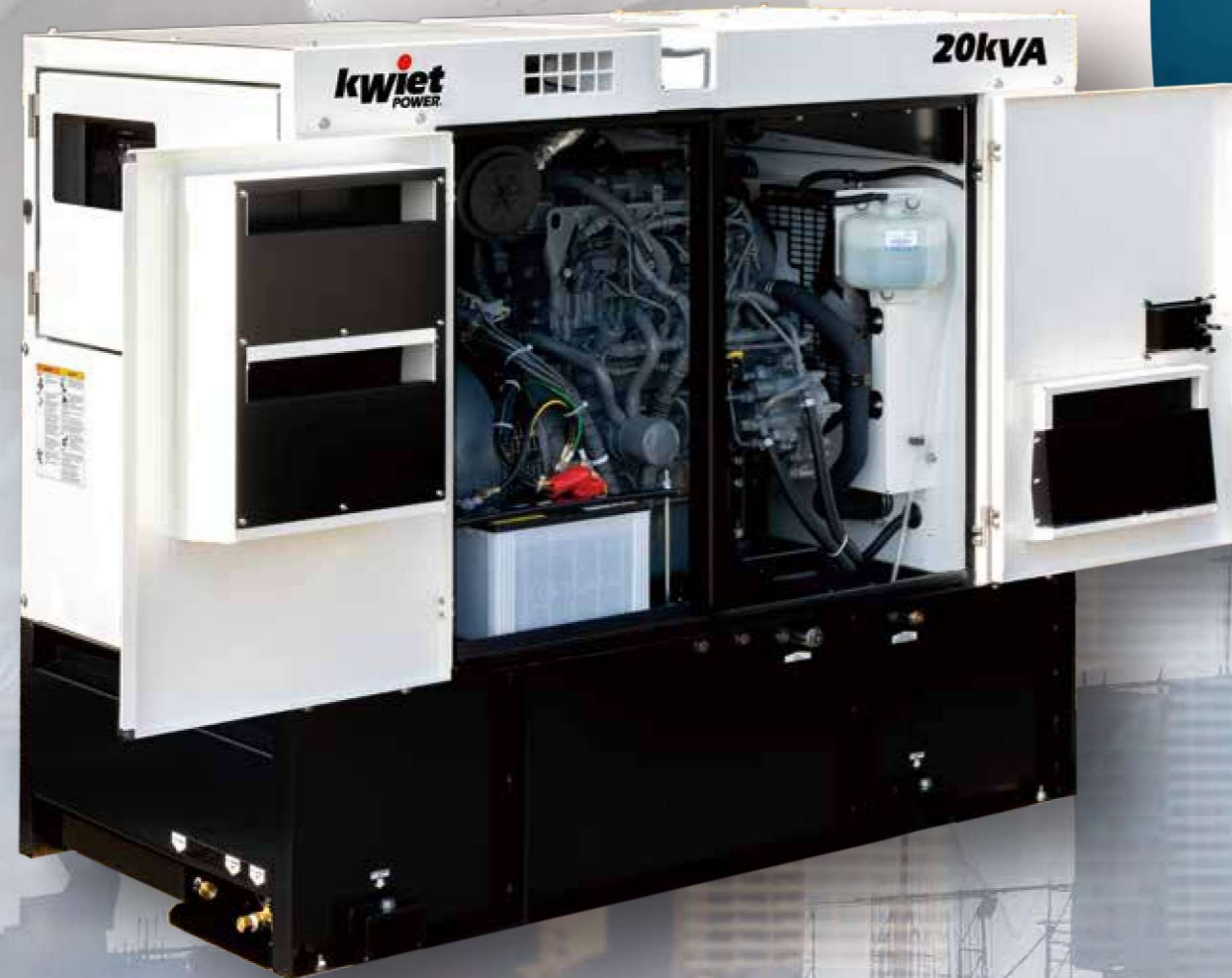
**YAMABIKO**  
やまびこ



# Challenges to minimize downtime

The reliability and durability of Shindaiwa brand generators adheres to the Monozukuri philosophy "JAPAN Technology" .

Shindaiwa is known around the world for its unrivaled dedication to quality and increasing the productivity of professionals.

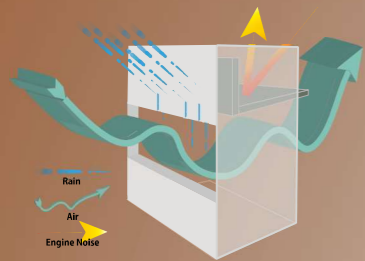




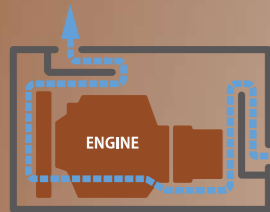
# Challenges to minimize downtime

## Design

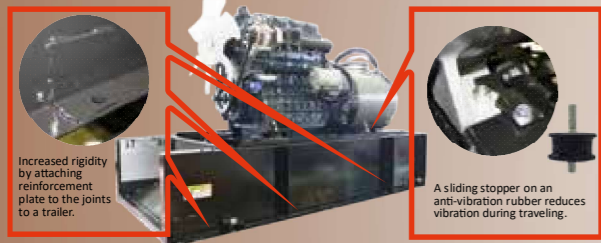
Avoids water ingestion, sound attenuation, anti-vibration



In order to maximize engine performance, air intake must be maximized whilst ensuring there is no water ingestion into the unit. Shindaiwa generators are designed with this in mind, and we have mastered these features.



Sound-attenuation  
Sound-attenuation is achieved by unique design that's the result of decades of research and expertise.



Vibration resistance  
Shindaiwa generators and welders are mechanically designed to absorb vibration to ensure optimal engine performance and low noise.

## Engine that's designed and made in Japan

Long-time operation, prolonged life



## Alternator production technology

Dust resistant, durable



Varnish application over the alternator, which provides durability against high rotational speed, dust, and humidity.



## Surface coating

Weather resistance, corrosion protection



The quality of the exterior is just as important as the interior components. That's why Shindaiwa use advanced, highly resistant coating that protects in the harshest environments and prevents corrosion. Outer components of Shindaiwa products are covered by electro-deposits and powder coating. Two layers protect the product from corrosion and degrading. Conventional painting technology cannot achieve this level of protection.

## Power generation control

Output fluctuation control

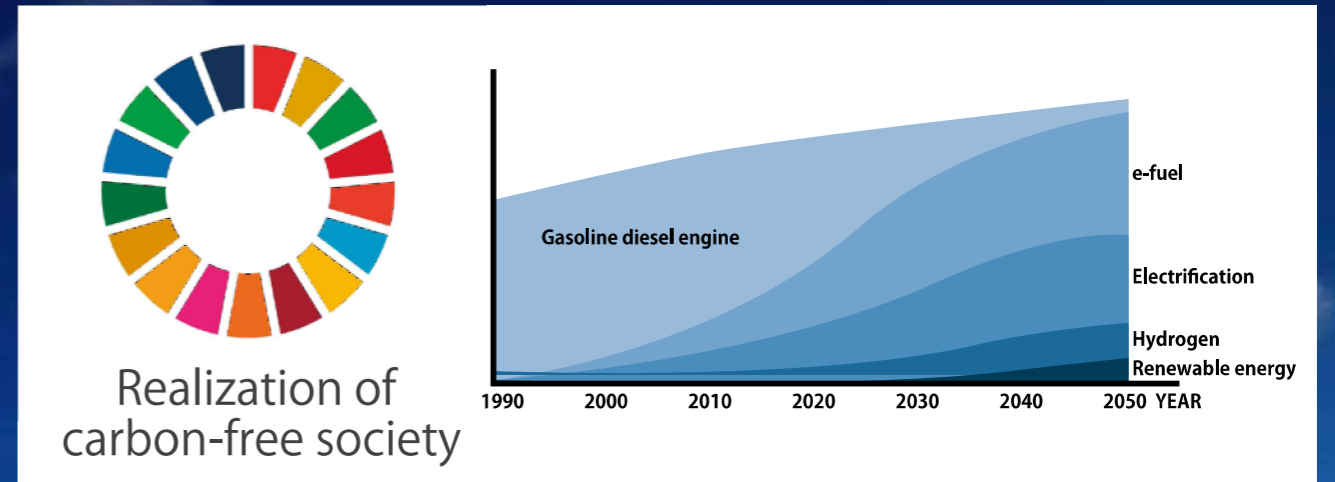
On jobsites where generators run with frequent fluctuating output, accumulated control is a necessity. Shindaiwa has listened to its customers and fine-tuned features like this to deliver products that exceed expectations.





# Shindaiwa energy and the environment

When it comes to low emissions, Shindaiwa is one of the world leaders.



Connecting people, nature, and future through sustainable development



# Shindaiwa Generator Representative Models



	Rated Frequency		Hz	50	60
	<b>AC Generator</b>	200V	3-Phase, 4 Wire 200V Class	kVA	20
V				200	220
A				57.7	65.6
R-O			kVA	6.7	8.3
			V	115.5	127.0
			A	57.7	65.6
R-S			kVA	11.54	14.432
			A	57.7	65.6
			A	57.7	65.6
1-Phase, 3 Wire (Exclusive Terminal)			kVA	—	—
			V	—	—
			A	—	—
		A	—	—	
Auxiliary Output		kVA × pcs	—	—	
		V	—	—	
		A × pcs	—	—	
		A × pcs	—	—	
400V		3-Phase, 4 Wire 400V Class	kVA	20	25
			V	400	440
			A	28.9	32.8
		R-O	kVA	6.7	8.3
			V	230.9	254.0
			A	28.9	32.8
		R-S	kVA	11.56	14.432
			V	400	440
			A	28.9	32.8
		3-Phase Auxiliary Output	kVA × pcs	—	—
			V	—	—
	A × pcs		—	—	
A × pcs	—		—		
1-Phase Auxiliary Output	kVA × pcs	—	—		
	V	—	—		
	A × pcs	—	—		
	A × pcs	—	—		
<b>Diesel Engine</b>	Fuel		Diesel		
	Fuel Tank Capacity	L	65		
	Fuel Consumption @ 75% Load	L/h	4.0 5.0		
<b>Others</b>	L x W x H	mm	1500x700x1000		
	Dry Weight [Mass in working order]	kg	625[705]		
	Emission Control		Equivalent to Japan 2nd		



# Product Lineup



■ Diesel Engine Generator 25kVA~150kVA



■ Diesel Engine Generator (3-phase, 1-phase simultaneous) 8kVA ~ 100kVA

■ Diesel Engine Generator (Tier 4) 7kVA~180kVA



■ Diesel Engine Welder 200A~500A



■ Wire Feeder



■ Light Tower



■ Gasoline Engine Welder



**shindaiwa<sup>®</sup>**

**YAMABIKO CORPORATION**

35 SHIN UJIGAMI, KITA HIROSHIMA CHO,  
YAMAGATA GUN, HIROSHIMA 731-1597 JAPAN

TEL +81-826-72-5140

FAX +81-826-72-7004

E-mail : [ipe\\_sales@yamabiko-corp.co.jp](mailto:ipe_sales@yamabiko-corp.co.jp)

**YAMABIKO**