

National Free Service Hotline
400 889 9871



SUZHOU DEAO ELEVATOR CO., LTD.
Add: No.588, Yita Road Wujiang Economic Development Zone, Jiangsu province
Tel: +86-512-63328777
Fax: +86-512-63327208
Http://www.deao-elevator.com
E-mail:Export@DEAO-elevator.com

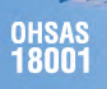


This publication is for general informational purposes and we reserve the right at any time to alter product design and specification. No statement contains should be construed as a warranty or condition, express or implied, as to any product, it's fitness for any particular purpose or quality, or any modifications or representation of the terms of any purchase agreement.

Printed June 2023



DEAO
ELEVATOR



**Sino-Germany
Joint Venture**
SUZHOU DEAO ELEVATOR CO., LTD.

Span Innovation



2006

Suzhou DEAO Elevator Co., Ltd., a Sino-foreign joint venture, was registered and founded. Its nearly-60,000-square-meter factory buildings have been formally put into use.

2008

It won titles of "a High-tech Enterprise" and "Famous-brand Products in Suzhou City."

2009

It successively obtained the CE certification of the EU and the export certification of Russia and began to offer products in the global market.

2010

Its products are used in General Motors Pavilion of Shanghai World Expo.

2012

It successfully held DEAO Elevator Beijing Forum in the Great Hall of the People in Beijing and was rated as an "Enterprise Technology Center in Suzhou City."

2013

It has built a long-term partnership respectively with Shenzhen China Merchants Property Development and Shenzhen OCT Properties which already began installed batches of DEAO villa elevators in their real-estate development projects.

2014

It was rated as "an Enterprise Center in Jiangsu Province" and set up "DEAO Application College."

德奥电梯
DEAO ELEVATOR

2015

It was rated as "a Famous Trademark in Jiangsu Province."

2016

It successfully developed super-high-speed elevators with a running speed of 8m/s, which was rated as "a Demonstrative Industrialization Project of the National Torch Program."

2017

It won the "Quality Award of Suzhou City" and has obtained more 100 international and domestic patents.

2018

Its testing center has obtained the CNAS laboratory certification.

2019

It was one of the first domestic enterprises which obtained the highest-level manufacturing license (A1) of the elevator industry issued by the General Administration of Quality Supervision, Inspection and Quarantine of the P.R.C.

2020

It won the "Quality Award of Suzhou City" again.

2021

DEAO Application College was rated as an excellent enterprise college, a model organization in cooperation between enterprises and colleges and a provincial demonstrative training base.

2022

It successfully developed freight elevators with a load capacity of 5,000kg and a running speed of 2m/s, and obtained a license for manufacturing.



Intelligent Exhibition Hall Future Within Reach



Craftsmanship Innovative Manufacturing

Stepping Into Elevator Industry 4.0 Era



Intelligent



Informatization



10 Major Core Parts Original

Control System

Advanced modular design and precision position detecting technology contribute to extraordinary leveling accuracy. Rapid closed-loop vector control and the best speed curve improve operation efficiency and ensure comfortable riding experiences.

- Accurate Leveling
- Stable and Efficient
- Comfortable Experiences



Permanent Magnet Synchronous Gearless Traction Machine

The new-generation of permanent magnet technology, the high-power factor and zero slip difference effectively improve operation efficiency and lower costs of energy consumption while creating a quieter operation environment by reducing noise.

- Reduce Noise
- Save Energy
- Efficient Operation



Speed Governor

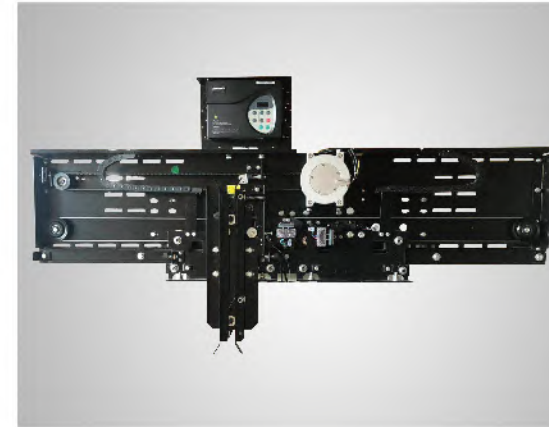
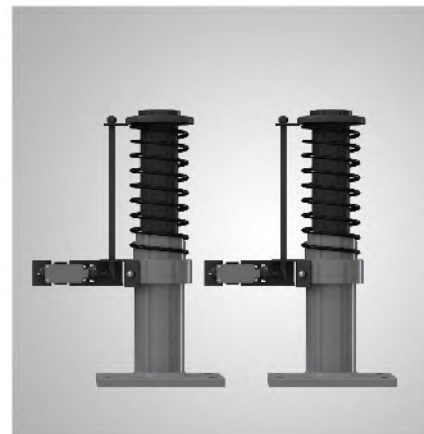
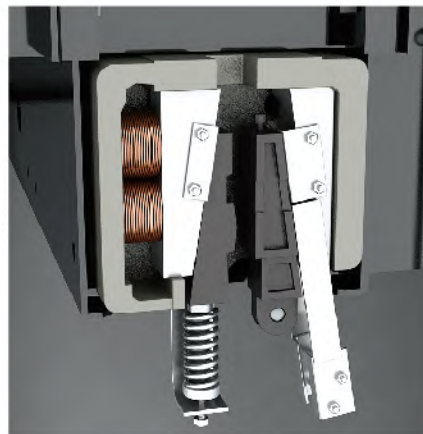
It monitors the running speed of cars in real time to ensure that elevators don't overspeed.

Safety Gear

When the car overspeeds downward, it enables the car to brake on the guide rails in an emergency to prevent the fall of the car.

Buffer

As the last link of the elevator safety system, it effectively absorbs or consumes the impact energy of the descending car.



Permanent Magnet Synchronous Door Operator

It uses a permanent magnet synchronous motor which features a large rated torque and is efficient, energy-saving and eco-friendly. It uses the synchronous door operator with the integrated car door locking function which truly realizes the synchronous opening and closing of landing and car doors.

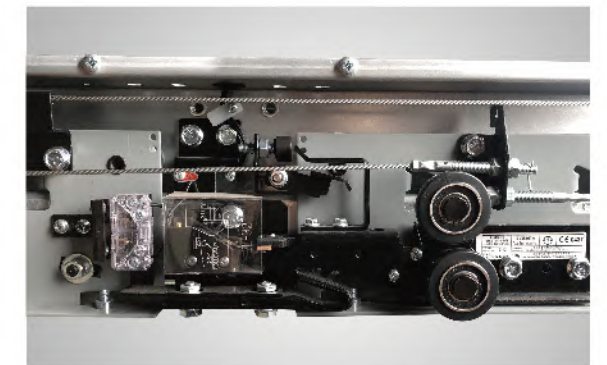
It adopts the synchronous belt drive which features zero slip difference, stable operation and lower noise.

It adopts closed-loop servo control technology which features easy debugging and high control precision.

The door strap is equipped with an anti-collision safety hook, safe and reliable.

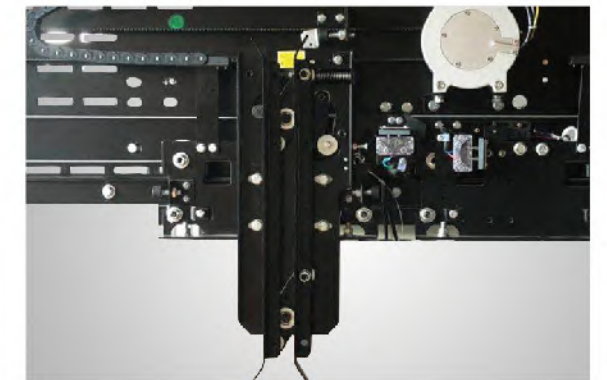
Landing Door Lock

It can prevent accidents caused by accidental opening of the landing door when the car isn't in the door area to improve elevator safety.



Car Door Lock

It can effectively prevent the car door from opening accidentally or being opened by passengers which may stop or cause other accidents.

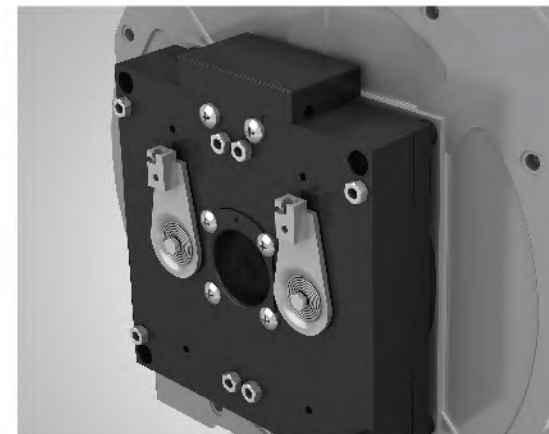


Upward Overspeed Governor

The upward speed of the elevator exceeds 1.2 times of rated speed, the device automatically slows down or stops the elevator.

Unintended Car Movement Protection System

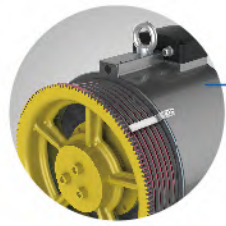
It automatically checks whether the car moves without instructions. It uses the control system to trigger the brake to stop the car to ensure passenger safety.



Passenger elevator

DP series small machine room passenger elevator

Max 2000kg 8m/s



Core drive

Permanent magnet synchronous and gearless host



Handy and compact

Custom-made elevator special-purpose thin control cabinet



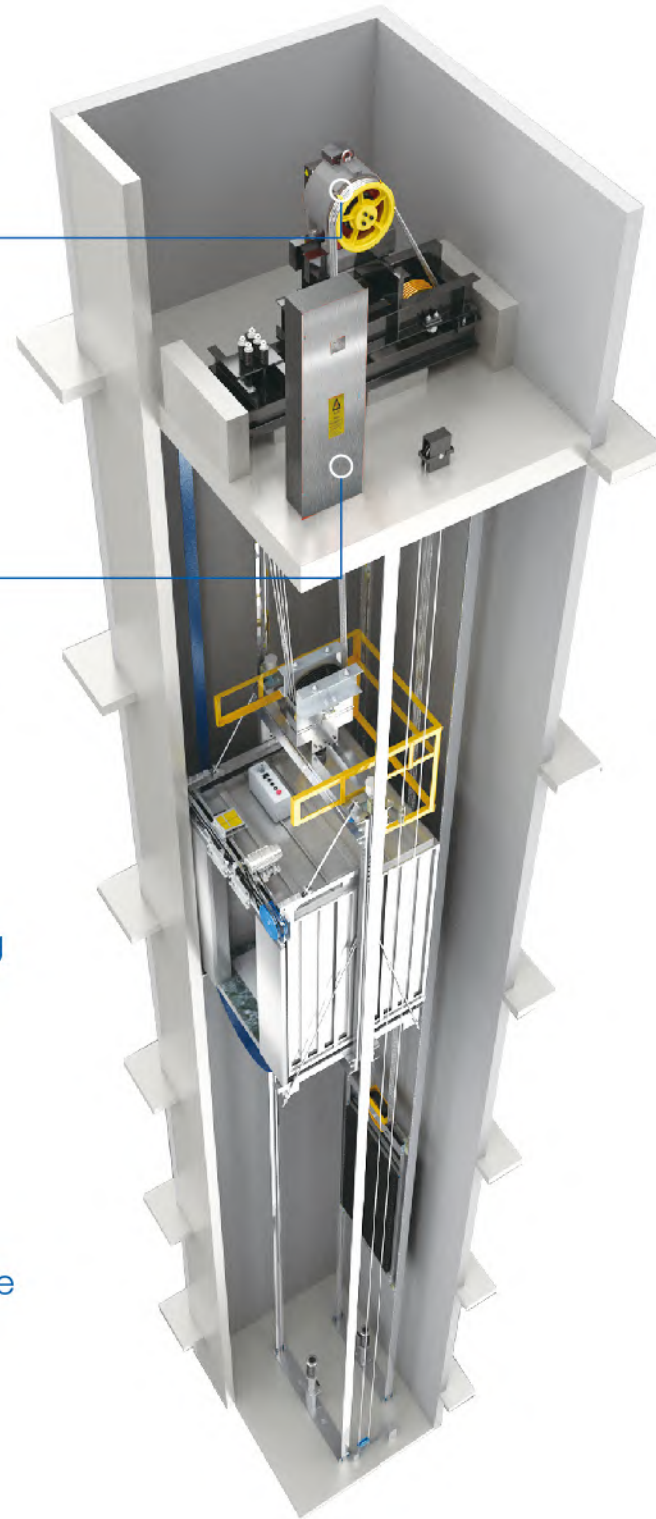
Energy-saving upgrading

Energy feedback technology



Green and magical space

LED car lighting and LED automatic lighting



DPN series machine roomless passenger elevator

Max 1600kg 2.5m/s

For a long time, Suzhou DEAO aims to help clients to create perfect experience, our innovative technology not only provides passengers with smooth and quiet enjoy to take a ladder, but also offers more free space for stylist and saves the cost of construction.

It effectively utilizes the space

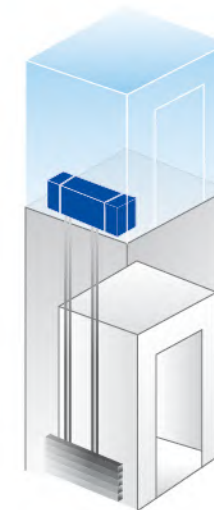
It puts the whole elevator in the well. It removes the restriction of machine room to the building.

It saves the building cost

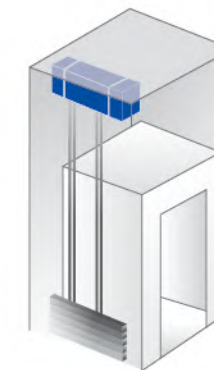
All the equipments are installed in the well. It saves the cost for the builders.

It brings about infinite freedom to the architectural design

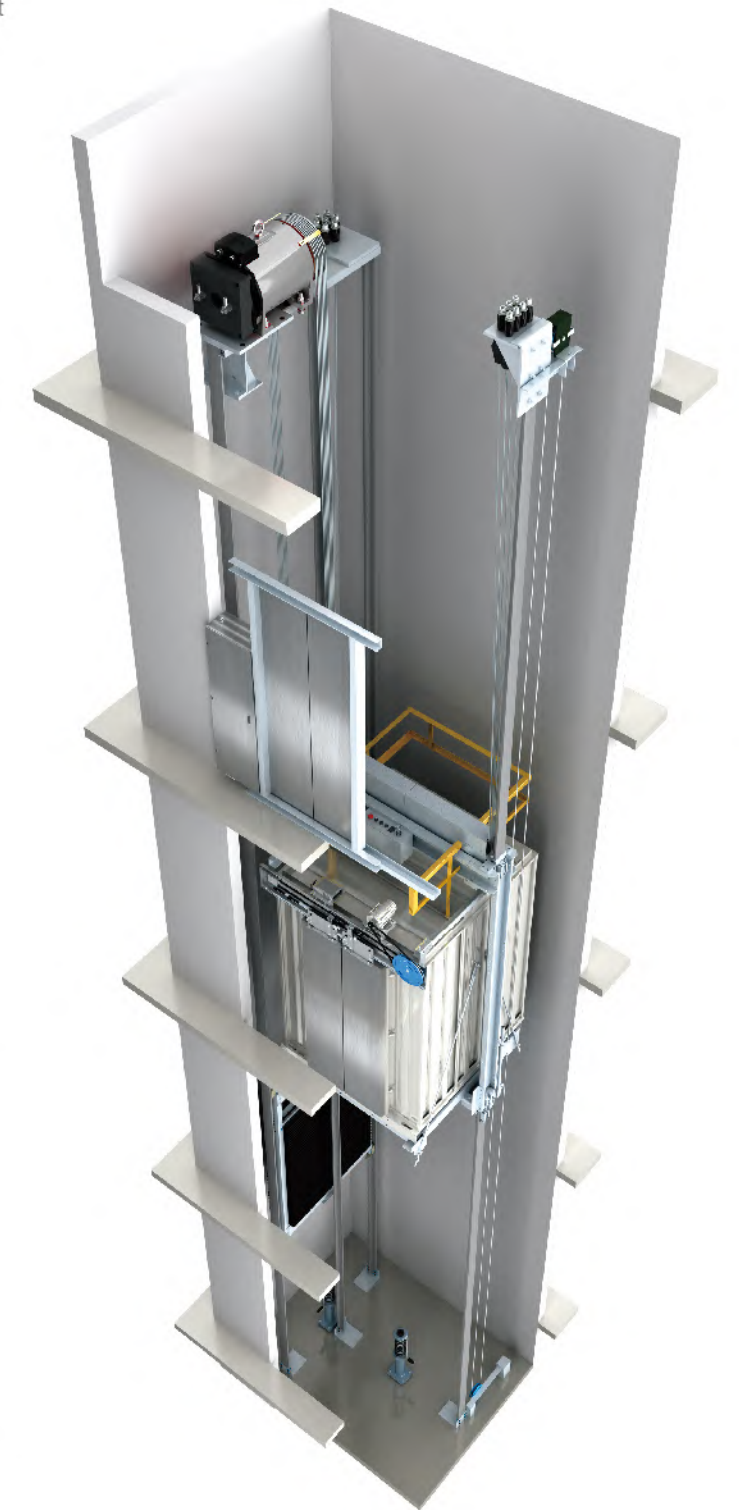
It leaves machine room space for vast architects / developers to execute the freer design modes.



The small room



Machine-Room-Less



Passenger Elevator Car Decoration

Passenger elevator car

DE-006 Standard

- Ceiling** Luxury mirror stainless steel, LED light decoration
- Car wall** Hairline stainless steel
- Floor** PVC



Scan QR code
360 degree car



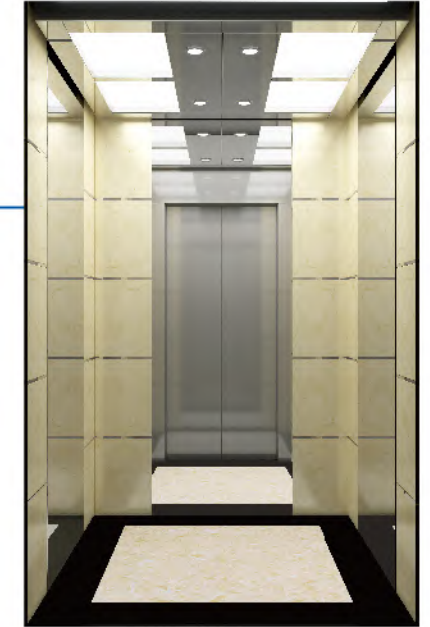
Note: Pictures have been drawn by computer. It might be slightly different from actual colors. Please take real product as criterion.

DE-60 Optional

- Ceiling** Mirror stainless steel, LED light decoration
- Car wall** Mirror stainless steel, Marble on both sides
- Floor** Parquet marble



Scan QR code
360 degree car



DE-009 Optional

- Ceiling** Mirror stainless steel, LED light decoration
- Car wall** Hairline stainless steel, Mirror etched stainless steel
- Floor** PVC



Scan QR code
360 degree car

DE-68 Optional

- Ceiling** Mirror stainless steel, LED light decoration
- Car wall** Mirror stainless steel, Mirror etched stainless steel-champagne gold
- Floor** Parquet marble



Scan QR code
360 degree car



DE-010 Optional

- Ceiling** Mirror stainless steel, LED light decoration
- Car wall** Wood grain steel plate, Mirror etched stainless steel
- Floor** PVC



Scan QR code
360 degree car

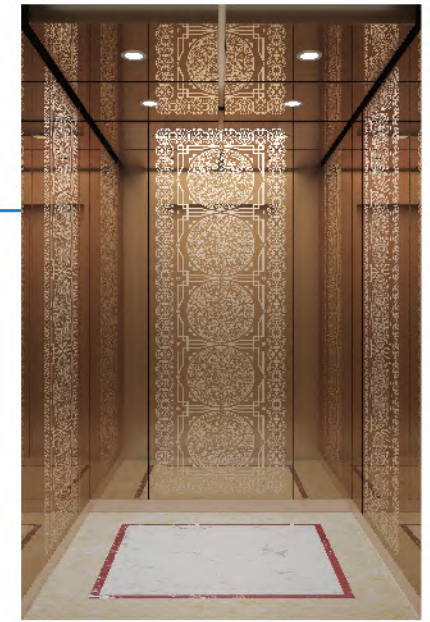


DE-70 Optional

- Ceiling** Rose gold mirror stainless steel, LED light decoration
- Car wall** Rose gold etched stainless steel
- Floor** Parquet marble



Scan QR code
360 degree car



Passenger Elevator Car Decoration

Passenger elevator car

DE-71 Optional

- Ceiling** Bronze mirror stainless steel, LED light decoration
- Side wall** Bronze mirror stainless steel
- Back wall** Bronze mirror stainless steel, Bronze mirror etching
- Floor** Parquet marble



Scan QR code
360 degree car



DE-72 Optional

- Ceiling** Mirror stainless steel, LED light decoration
- Side wall** Titanium hairline stainless steel, Mirror stainless steel
- Back wall** Titanium hairline stainless steel, Mirror etched stainless steel
- Floor** Parquet marble



Scan QR code
360 degree car



DE-73 Optional

- Ceiling** Mirror stainless steel, LED light decoration
- Car wall** Rose Gold Hairline Stainless Steel, Rose Gold Mirror Etching
- Floor** Parquet marble

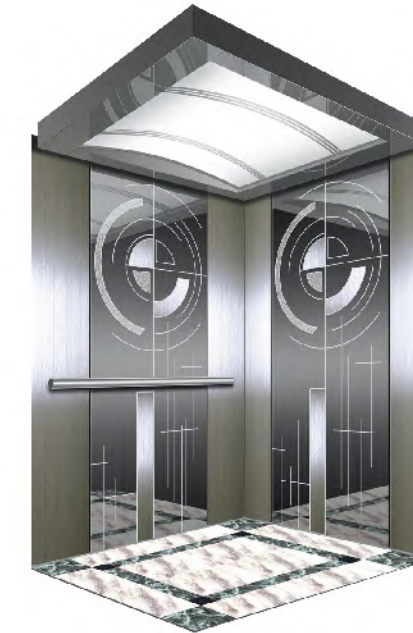


Scan QR code
360 degree car

Note: Pictures have been drawn by computer. It might be slightly different from actual colors. Please take real product as criterion.

DG-17 Optional

- Ceiling** Wide vaulted white transparent light board for soft illumination design
- Car wall** Mirror finish, etching finish, Hairline finish
- Handrail** Stainless steel
- Floor** PVC

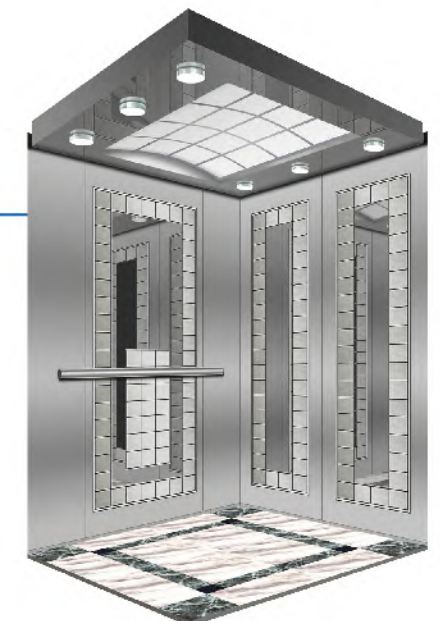


DG-18 Optional

- Ceiling** Wide vaulted white transparent light board for soft illumination design
- Car wall** Mirror finish, etching finish, hairline finish
- Handrail** Stainless steel
- Floor** PVC

DG-19 Optional

- Ceiling** Cylindrical hollow transparent lamp column, arched white organic transparent soft light lighting design
- Side wall** mirror, etch, hairline, and grain
- Back wall** mirror, etch, hairline, and grain
- Handrail** Stainless steel
- Floor** PVC

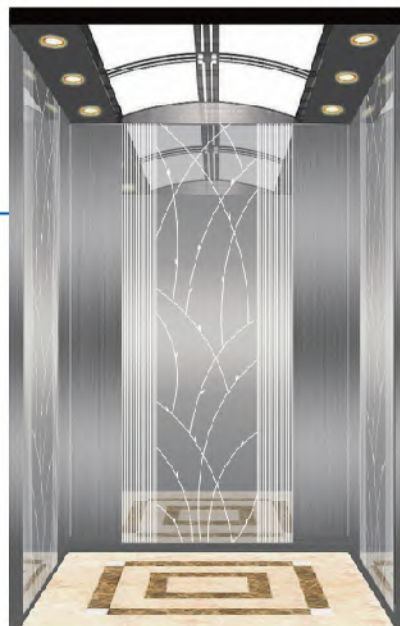


Passenger Elevator Car Decoration

Passenger elevator car

DE-014 Optional

- Ceiling** Hairline stainless steel, LED light decoration
- Car wall** Hairline stainless steel
Mirror etched stainless steel
- Floor** Marble



DE-015 Optional

- Ceiling:** cylindrical hollow transparent lamp column, arched white organic transparent soft light lighting design
- Side and back walls:** mirror, etch, hairline, and grain
- Handrail:** Stainless steel
- Floor:** Marble

DE-016 Optional

- Ceiling:** Double vaulted white organic shade board and middle with tube lamp for soft illumination design
- Car wall:** Mirror, etching, hairline
- Handrail:** Stainless steel
- Floor:** PVC



Note: Pictures have been drawn by computer. It might be slightly different from actual colors. Please take real product as criterion.

DE-017 Optional

- Ceiling** Hairline stainless steel soft light
- Car wall** Hairline stainless steel
Mirror etched stainless steel
- Floor** PVC



DE-018 Optional

- Ceiling** Mirror stainless steel
- Car wall** Hairline stainless steel
Mirror etched stainless steel
- Floor** PVC

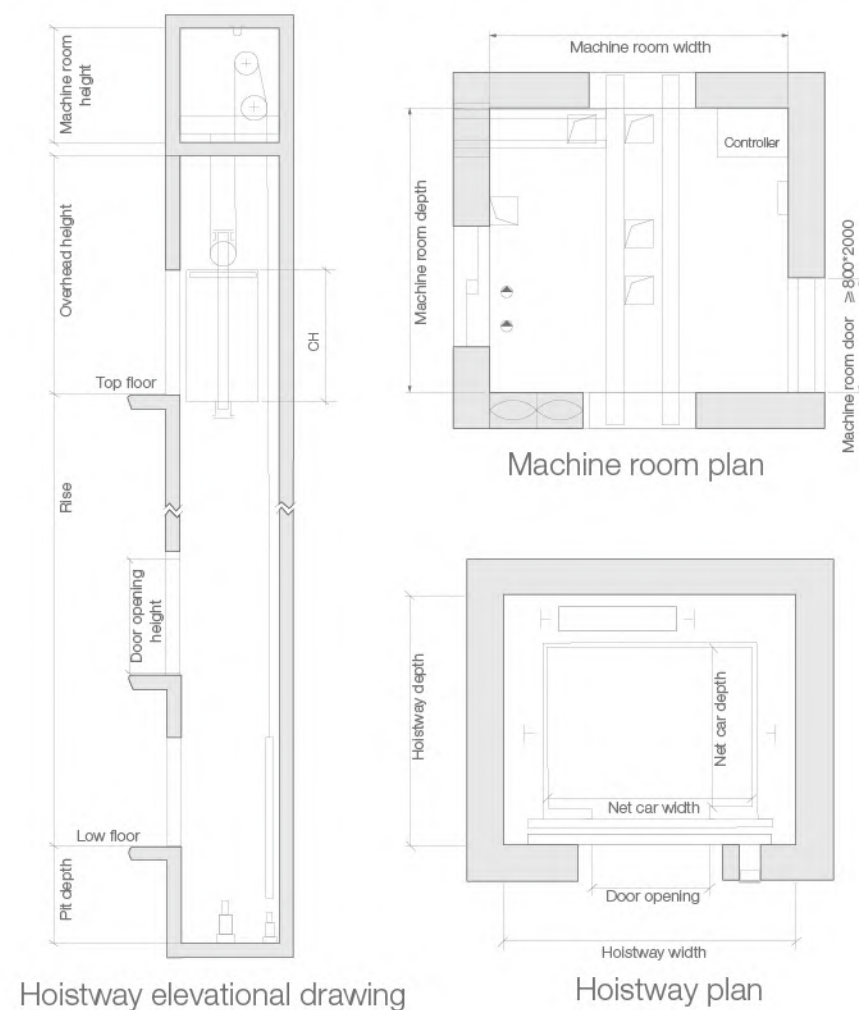
DE-019 Optional

- Ceiling** Hairline stainless steel, LED lights
- Car wall** Hairline stainless steel
Mirror etched stainless steel
- Floor** PVC

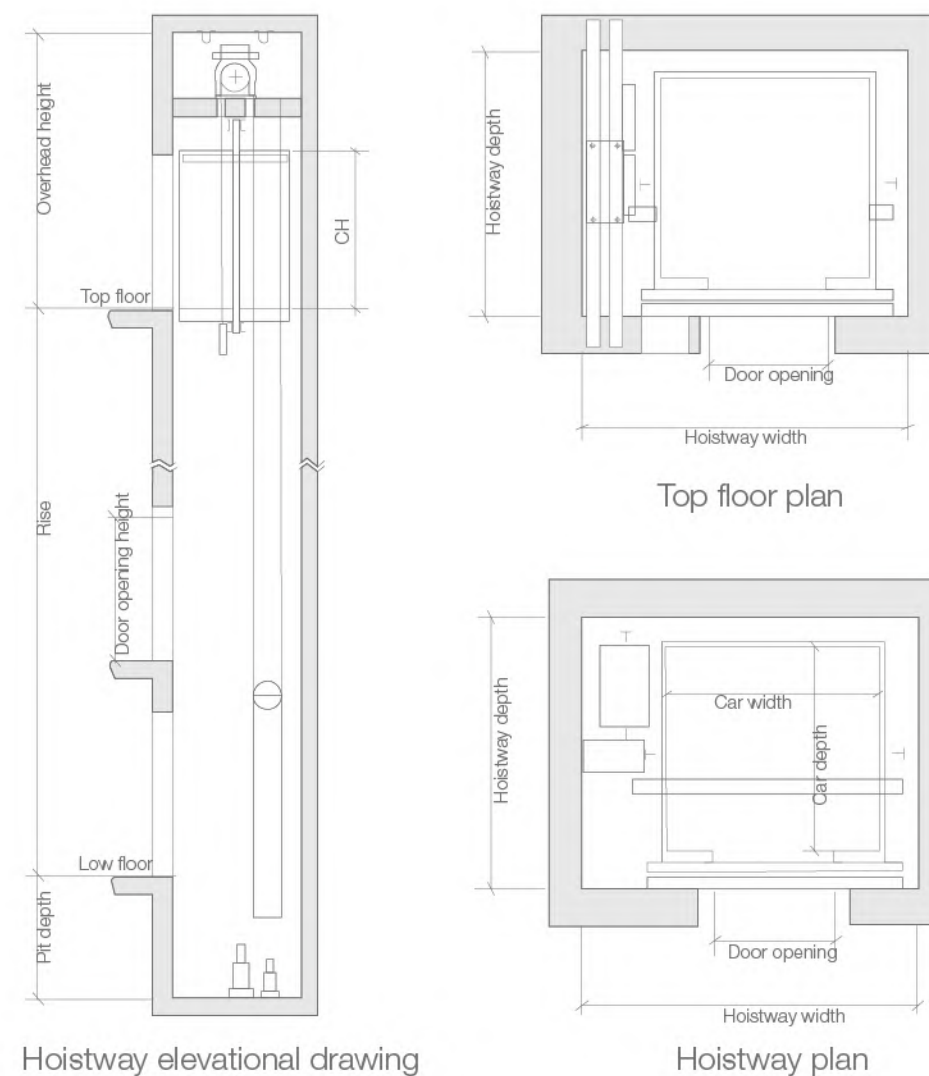


Construction parameter

DP Small machine room passenger elevator construction



DPN Machine roomless passenger elevator construction



DP SMALL MACHINE ROOM PASSENGER ELEVATOR CONSTRUCTION PARAMETERS

Loading capacity (PRS)	Rated speed (m/s)	Door opening size (mm)	Car size(mm)			Hoistway size (mm)		Machine room size (mm)			Top floor height (mm)	Pit depth (mm)	Max.travelling height(m)					
			Width	Depth	Height	Width	Depth	Width	Depth	Height								
630kg (8 PRS)	1.0	800	1400	1100	2400	1850	1700	1850	1700	2000	3950	1200	60					
	1.5										4050	1300	75					
	1.75										4150	1350	90					
800kg (10 PRS)	1.0	800	1400	1350	2400	1850	1950	1850	1950	2000	3950	1200	60					
	1.5										4050	1300	75					
	1.75										4300	1350	90					
	2.0										4400	1450	100					
	2.5										1950	2050	1750	2050	2000	4750	1800	120
	1.0										3950	1200	60					
1000kg (13 PRS)	1.5	900	1600	1400	2400	2050	2000	2050	2000	2000	4050	1300	75					
	1.75										4300	1350	90					
	2.0										4400	1450	100					
	2.5										2150	2100	2150	2100	2000	4750	1800	120
	1.0										4200	1300	60					
1250kg (16 PRS)	1.5	1100	1900	1500	2400	2400	2150	2400	2150	2200	4300	1400	75					
	1.75										4400	1450	90					
	1.0										4300	1300	60					
1600kg (20 PRS)	1.5	1100	2000	1750	2400	2500	2400	2500	2400	2200	4400	1400	75					
	1.75										4500	1450	90					
	1.0										4300	1300	60					

Note: Only for reference, final manufacture please follow contract.

DPN MACHINE ROOMLESS PASSENGER ELEVATOR CONSTRUCTION PARAMETERS

Loading capacity (PRS)	Rated speed (m/s)	Door opening size (mm)	Car size(mm)			Hoistway size(mm)		Top floor height (mm)	Pit depth (mm)	Max.travelling height(m)
			Width	Depth	Height	Width	Depth			
450kg (6 PRS)	1.0	700	1100	1100	2400	1850	1600	4100	1400	35
	1.5							4200	1500	60
	1.75							4250	1600	75
630kg (8 PRS)	1.0	800	1400	1100	2400	2100	1600	4100	1400	60
	1.5							4200	1500	75
	1.75							4250	1600	90
800kg (10 PRS)	1.0	800	1400	1350	2400	2100	1750	4100	1400	60
	1.5							4200	1500	75
	1.75							4250	1600	90
1000kg (13 PRS)	1.0	900	1600	1400	2400	2300	1800	4100	1400	60
	1.5							4200	1500	75
	1.75							4250	1600	90
1250kg (16 PRS)	1.0	1100	1900	1500	2400	2800	1900	4500	1500	60
	1.5							4600	1600	75
	1.75							4650	1700	90
1600kg (20 PRS)	1.0	1100	2000	1750	2400	2900	2150	4500	1500	60
	1.5							4600	1600	75
	1.75							4650	1700	90

Note: Only for reference, final manufacture please follow contract.

Panoramic elevator Car Decoration

DE-G001 Standard

- Car cover:** Baked enamel sheet, decoration tightings
- Observation wall:** 6+6 Safety glass panel (circle)-3 pieces
- Decoration roof:** Baked enamel steel and acrylic
- Car wall:** Hairline stainless steel
- Handrail:** Stainless steel tube
- Floor:** PVC



DE-G002 Standard

- Ceiling:** Mirror stainless steel, LED light decoration
- Car wall:** Hairline stainless steel
- Sightseeing area:** 6+6 laminated safety glass
- Armrest:** Hairline brushed
- Floor:** PVC

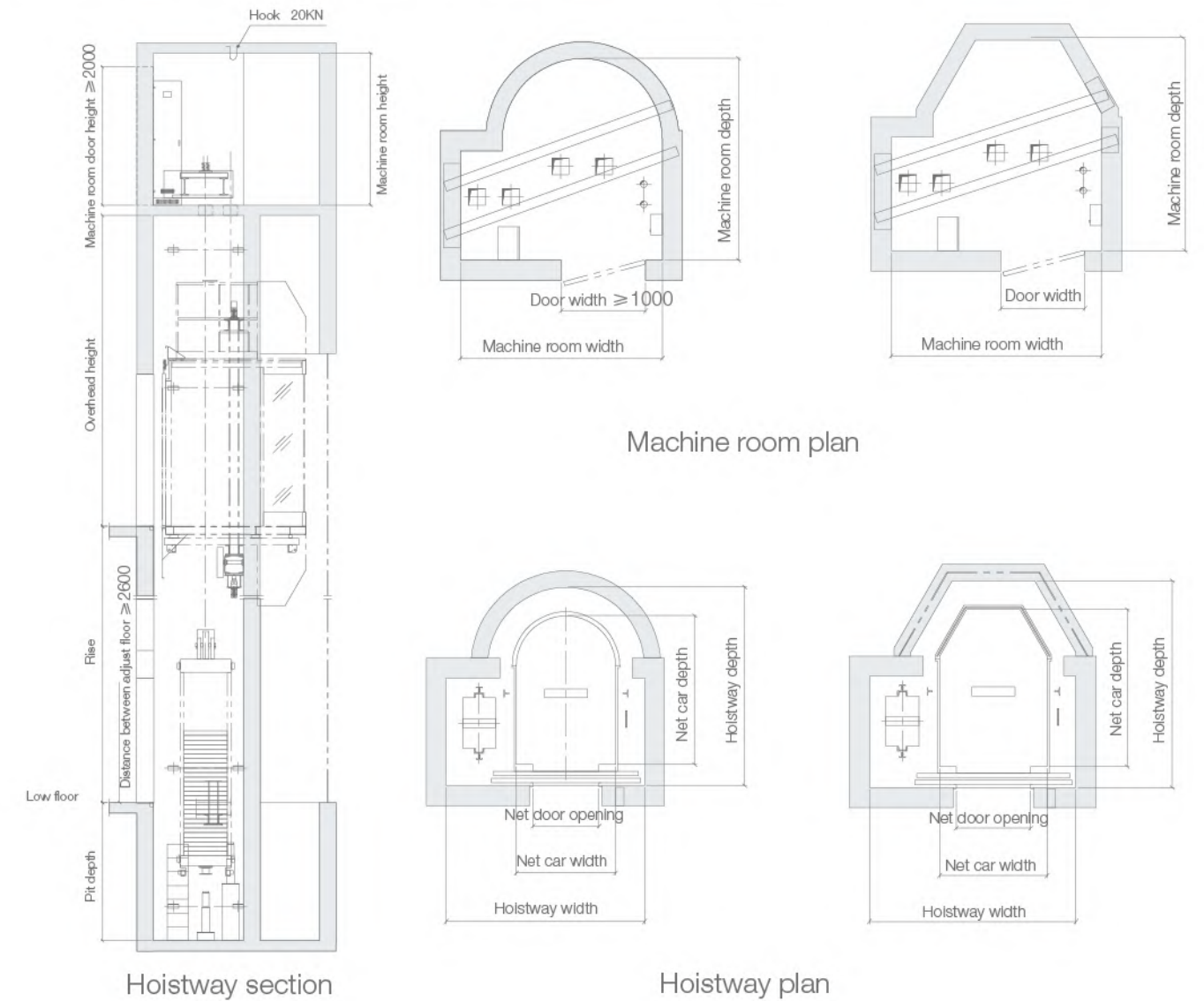
DE-G004 Optional

- Upper and lower cover:** steel plate baking paint, two inner transparent belt decoration
- Sightseeing wall:** 180 degree round safety glass with glue (3 pieces)
- Glass thickness:** 6+6
- Decorative top:** steel plate painted frame, radial milky white acrylic decoration, the second half with acrylic crystal decoration
- Wall:** textured stainless steel
- Handrail:** Φ38 stainless steel pipe
- Floor:** PVC



Construction parameter

DPO series small machine room panoramic elevator



DPO SERIES SMALL MACHINE ROOM PANORAMIC ELEVATOR CONSTRUCTION PARAMETERS

Loading capacity (Passengers)	Speed (m/s)	Door opening size (mm)	Car size (mm×mm×mm)	Hoistway size (mm×mm)	Machine room size (mm×mm×mm)	Top floor height (mm)	Pit depth (mm)	Max. travelling height (m)
800kg (10 Passengers)	1.00	800	1200×1800×2400	2400×2400	2400×2400×2000	4500	2000	60
	1.50					4600	2000	75
	1.75					4600	2000	90
1000kg (13 Passengers)	1.00	900	1300×1900×2400	2500×2500	2500×2500×2000	4500	2000	60
	1.50					4600	2000	75
	1.75					4600	2000	90

Note: The construction parameters of half-round panorama lift and diamond panorama lift are the same. Please kindly contact our company for specific information. Above sizes are for design reference only. Regarding specific sizes, please take the construction layout drawing while signing the contract as criterion.

Note: Pictures have been drawn by computer. It might be slightly different from actual colors. Please take real product as criterion.

Bed Elevator

Careful and considerate showing humanistic concern
DEAO bed elevator series

DEAO Bed Elevator Series products are specially designed for hospitals, which adopts world leading science and technology and integrates microcomputer technology, power electronic technology, micro electronic technique and ultra-precision machining technology in one, creating a green channel for life.



DE-B006 Standard

- Car top:**Hairline stainless steel
- Car wall, Car door:**Hairline stainless steel
- Handrail:**Stainless steel flat handrail
- Floor:**PVC plastic floor
- Sill:**Hard aluminum



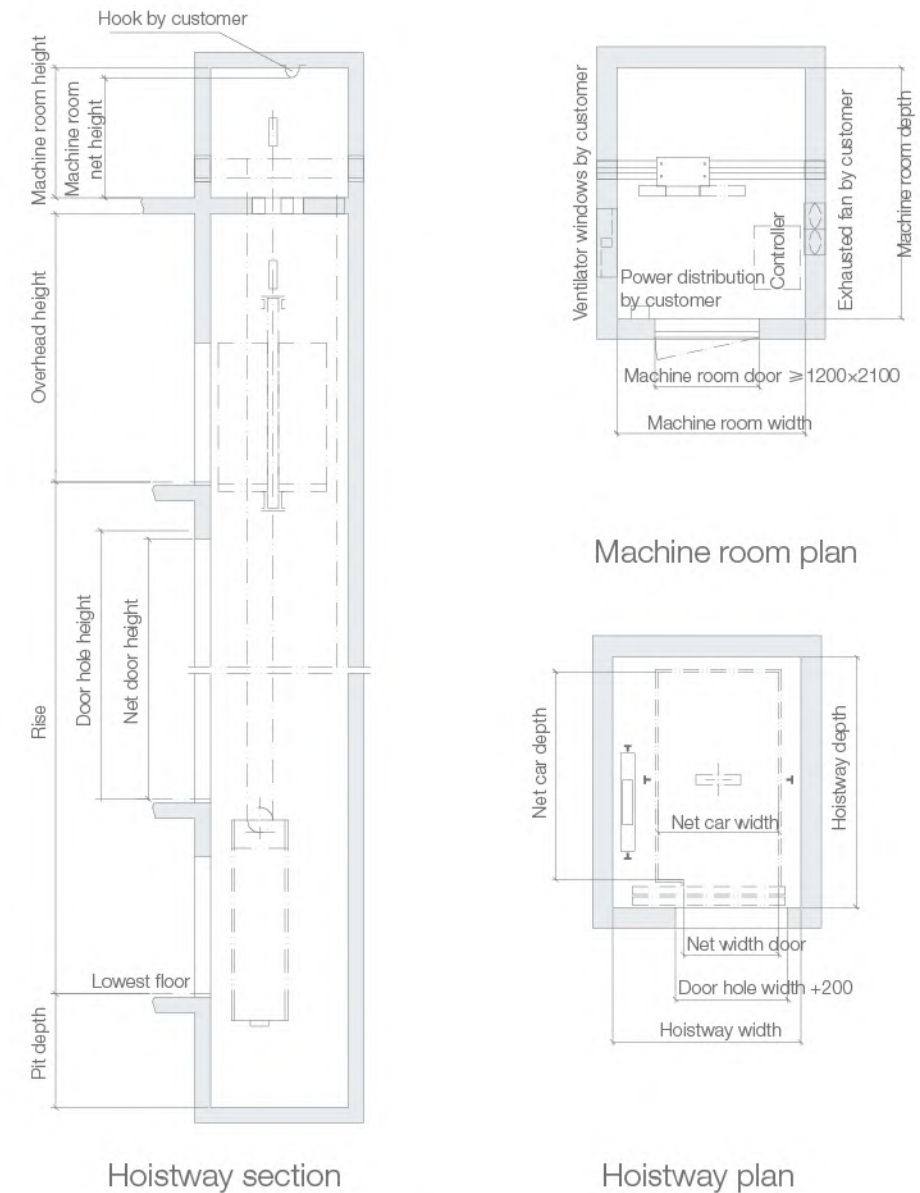
DE-B001 Optional

- Car top:**Steel plate plastic jet
- Car wall, Car door:**Hairline stainless steel
- Handrail:**Stainless steel flat handrail
- Floor:**PVC plastic floor
- Sill:**Hard aluminum

Note: Pictures have been drawn by computer. It might be slightly different from actual colors. Please take real product as criterion.

Construction parameter

DPB series small machine room bed elevator



DPB SERIES SMALL MACHINE ROOM BED ELEVATOR CONSTRUCTION PARAMETERS

Loading capacity	Speed (m/s)	Door opening size (mm)	Car size (mm×mm×mm)	Hoistway size (mm×mm)	Machine room size (mm×mm×mm)	Top floor height (mm)	Pit depth (mm)	Max.travelling height (m)
1600kg	1.00	1100	1400×2400×2400	2250×2900	2250×2900×2450	4350	1400	60
	1.50					4400	1500	75
	1.75					4450	1600	90

Note: Only for reference, final manufacture please follow contract.

Decoration Series

For passenger elevator only

Cop



Standard
(Integrated Cop)

DE-C01

DE-C02

DE-C03

DE-C04

DPC-001A

Display



DE1-S
LCD display



DE2-H
LCD display



DE3-S
Multimedia
picture display



DE4-H
Multimedia
picture display

Lop



DX-001A



DX-002C



DX-005C



DX-006C



DXB-007C



DX-008C



DX-007C



DPC-004
Handicapped COP



DX-004

Decoration Series

For passenger elevator only

Landing Door



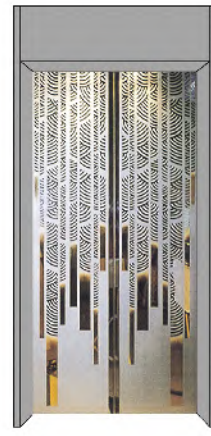
DE-T001
Mirror, etching, hairline



DE-T002
Mirror, etching, hairline



DE-T003
Mirror, etching, hairline



DE-T004
Titanium, mirror, etching



DE-T005
Mirror, etching



DE-T006
Mirror, etching, hairline



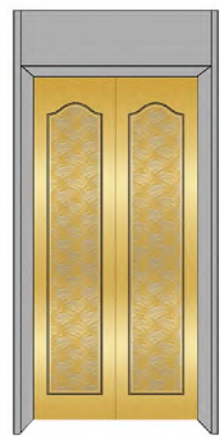
DE-T007
Mirror, etching, hairline



DE-T008
Mirror, relief, titanium



DE-T009
Mirror, etching, hairline, grain



DE-T010
Titanium, mirror, etching, hairline, grain

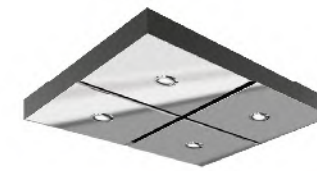


DE-T011
Mirror, etching, concave gold

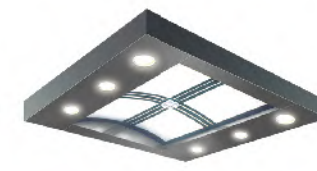


DE-T012
Mirror, etching, rose gold

Ceiling



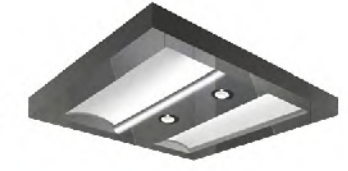
Standard



DE-D001
Can open trapped door



DE-D007
Can open trapped door



DE-D011

Handrail



DFS-001
Stainless steel φ 51mm



DFS-002
Stainless steel 80*1000mm



DFS-004
Stainless steel φ 51mm

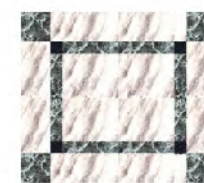


DFS-007
6mm stainless steel short grain, square end 80*1000mm

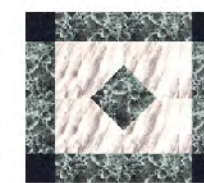


DFS-013
Titanium, round wood φ 51mm

Floor



FT-01



FT-02



FT-03



FT-04



FT-05



FT-06

Platform Elevators Unlock

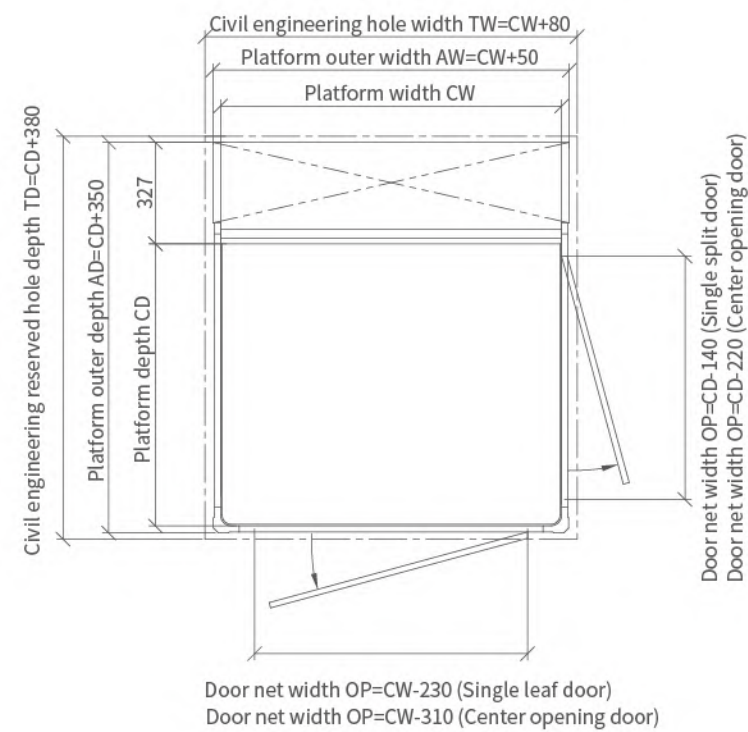
More Possibilities for Home Use

The DEAO platform elevator breaks through the imagination of the traditional villa elevator. With its outstanding aesthetic design ability, excellent space customization ability and global safety protection power, it is possible to unlock more home space and raise the villa life to a new height.

DHP100

Flexible customization, freeing up space

Lowest top level height	2250mm
Pit depth	0-60mm
Minimum space size	930x890mm
Platform width PW	Minimum 850mm, maximum 1400mm
Size range	Support internal 50mm increase/decrease
Platform depth PD	Minimum 510mm maximum 1110mm
Size range	Support internal 50mm increase/decrease



Platform Elevator

Hoistway frame color selection

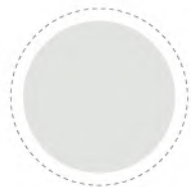


Deep gray

Optional



Champagne gold



Porcelain Hyun White



Frosted gold



Door opening type



Single-leaf swing door



Center opening door



Unequal double door

Car wall

More optional custom designs, please contact us

Lop



DHP-J001
Rock plate + touch screen control box (standard configuration)



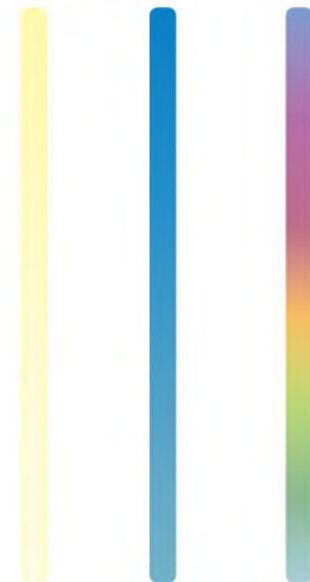
DHX-006B



DHX-008
Villa ladder optional

Ambient light option

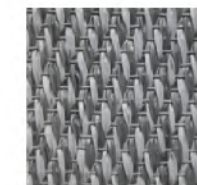
White Blue Rainbow



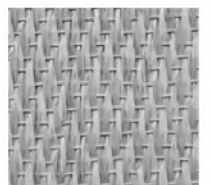
Woven Floor Series



DHP-F001



DHP-F002



DHP-F003

Color floor series



DHP-F004



DHP-F005



DHP-F006

Permanent Synchronous Gearless Traction Machine



Efficient Energy-saving Traction Machine

The DEAO elevator uses the rare-earth permanent magnet synchronous gearless traction machine which has no carbon brush and doesn't produce carbon ash. The built-in disc brake ensures safer and more reliable operation. It is 70% smaller than traditional traction machines with the same load. It uses the permanent sealed bearing needing no grease lubrication and is machine-room-less. It effectively transmits the power of the traction machine to the car and improves operation efficiency so it is more energy-saving than traditional geared traction machine.

Composite Steel Belt (Optional)

The DEAO elevator can select more energy-saving, eco-friendly and durable composite steel belts. Adopting efficient energy-saving traction machines, VF door operators, safe reliable light curtain door protection devices and other world-leading technologies, DEAO brings the elevator industry into a new stage of development.

Excellent Design and a Quiet Comfortable Environment

Non-contact and non-fan design and running noise lower than 45dB contribute to a quiet comfortable elevator environment.

Compact Structure and Optimized Space

The innovative structure design fully lowers the height of the traction machine so it is small and light and saves building space.

Professional Design and Easy Maintenance

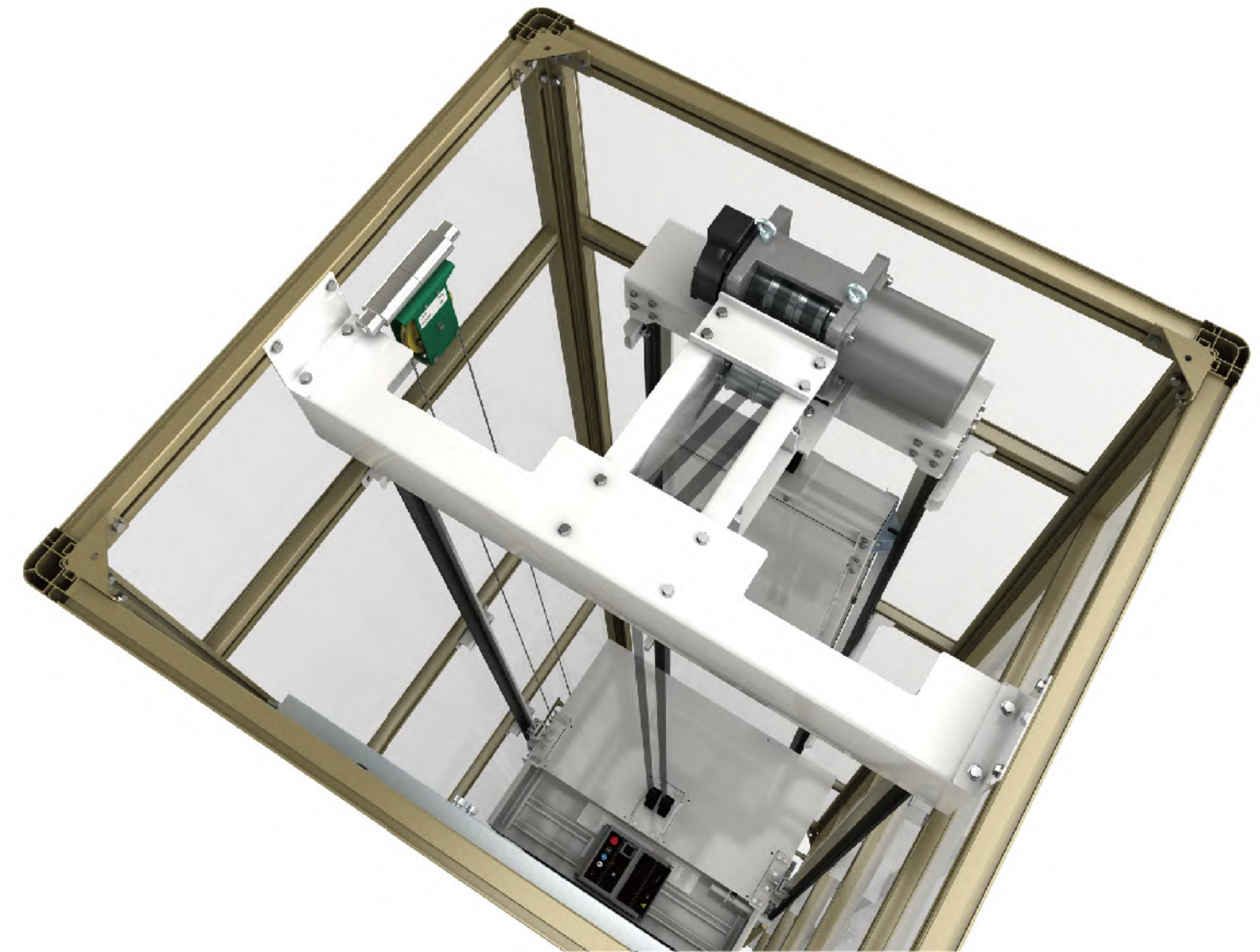
Thanks to the special brake design, it doesn't need to adjust brake clearance. The self-sealing bearing is free of greasy dirt and maintenance-free.

Triple-rescue Ensure Safety by Intelligent Technology

The built-in triple-rescue function provides intelligent safety protection to truly protect passenger safety.

Powerful and Efficient

The advanced European electromagnetic design with 12 pole pairs features low current, large torque and high transmission efficiency.



Villa elevator Car Decoration

DH-J10 Standard

Ceiling Mirror stainless steel + LED lights
Car wall Hairline stainless steel
Floor PVC



Scan QR code
360 degree car



Note: Pictures have been drawn by computer. It might be slightly different from actual colors. Please take real product as criterion.

DH-J31 Optional

Ceiling mirror stainless steel + Acrylic plate
Car wall Hairline + Mirror stainless steel
Floor Marble



Scan QR code
360 degree car



DH-J21 Optional

Ceiling Mirror stainless steel + LED lights
Car wall Middle- champagne gold
 Sides white pattern plate
Floor Marble



Scan QR code
360 degree car

DH-J15 Optional

Ceiling Gold mirror stainless steel
Car wall Middle-Gold etched + 2 sides-stone
Floor Marble



Scan QR code
360 degree car



DH-J10-1 Optional

Ceiling Mirror stainless steel + LED lights
Car wall 6+6mm Safety glass panel + stainless steel frame
Car door Safety glass door with stainless steel frame
Floor PVC



Scan QR code
360 degree car



DH-J32 Optional

Ceiling mirror stainless steel + Acrylic plate
Car wall Middle-wooden plate steel+ 2 sides-Hairline stainless steel
Floor Marble



Scan QR code
360 degree car



Villa elevator Car Decoration

DH-J38 Optional

Ceiling Gold stainless steel
Car wall Middle-Gold etched stainless steel + 2 sides gold mirror stainless steel
Floor Marble



Scan QR code
360 degree car



DH-J33 Optional

Ceiling Gold stainless steel
Car wall Gold etched stainless steel
Floor Marble



Scan QR code
360 degree car



DH-J52 Optional

Ceiling Champagne gold hairline stainless
Car wall 6+6mm Safety glass + champagne gold stainless steel frame
Floor PVC



Scan QR code
360 degree car

Note: Pictures have been drawn by computer. It might be slightly different from actual colors. Please take real product as criterion.



Scan QR code
360 degree car

DH-J34

Ceiling: Champagne gold + Acrylic plate
Car wall: Champagne gold stainless steel
Floor: Marble



Scan QR code
360 degree car

DH-J35

Ceiling: Wooden plate steel + LED lights
Car wall: Wooden plate steel + mirror stainless steel
Floor: Marble



Scan QR code
360 degree car

DH-J36

Ceiling: steel plate baking paint, transparent marble, tube lamp
Car wall: leather grain finish, art glass, deep champagne gold waistline
Armrest: Deep Champagne Gold Armrest
Car bottom: artificial marble
Front wall: deep champagne gold stainless steel
Car door: deep champagne gold stainless steel



Scan QR code
360 degree car

DH-J37

Ceiling: steel plate baking paint, titanium decorative frame, acrylic
Car wall: wood grain finish, art glass, titanium frame, hidden light strip
Armrest: Titanium handrail
Car bottom: artificial marble
Front wall: Titanium mirror stainless steel
Car door: titanium mirror stainless steel

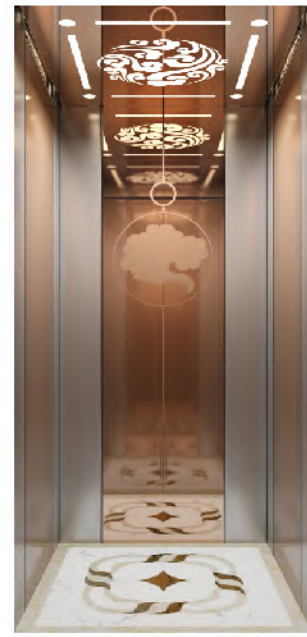
Villa elevator Car Decoration



Scan QR code
360 degree car

DH-J17

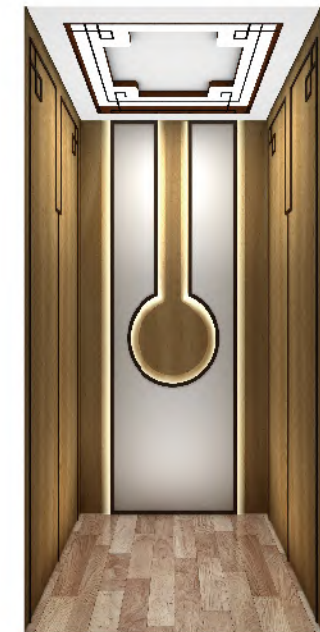
Ceiling: Mosaic decorative ceiling, cross flow fan, LED downlight
Car wall: Dark wood grain board, rose gold mirror surface and etched stainless steel combination
Armrest: Solid wood and titanium combination
Car bottom: artificial marble mosaic
Front wall: Rose gold mirror stainless steel
Car door: rose gold mirror stainless steel



Scan QR code
360 degree car

DH-J39

Ceiling: Mirror stainless steel, LED lighting
Car wall: antique copper mirror etched stainless steel, light antique copper hairline stainless steel, auxiliary plate sandblasted stainless steel
Car bottom: artificial marble mosaic
Front wall: antique copper mirror stainless steel
Car door: antique copper mirror stainless steel



Scan QR code
360 degree car

DH-J50

Ceiling: White painted frame + acrylic plate
Car wall: White painted steel with tear wood decoration
Floor: Marble



Scan QR code
360 degree car

DH-J51

Ceiling: White wooden ceiling +LED lights
Car wall: White painted steel with tear wood decoration
Floor: Marble

Landing Door Series



DH-T001
Gold mirror stainless



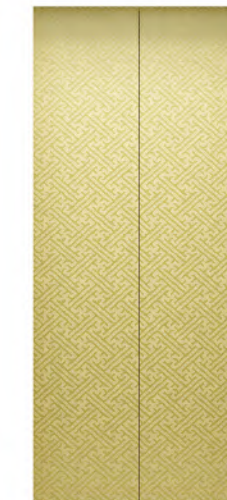
DH-T002
Gold mirror stainless



DH-T003
Gold mirror stainless



DH-T004
Champagne gold hairline steel



DH-T005
Gold mirror stainless



DH-T006
Rose mirror stainless



DH-T007
Gold Hairline stainless



DH-T008
Rose hairline stainless



DH-T009
Manual glass door + champagne stainless steel frame

Decoration Series

For home lift only

S Standard **O** Optional

Integrated Operation Panel **S**

Convenient and Comfortable. There are multiple panel materials available. It is harmonious with environment and is sensitive and convenient.

DH-C06



Human-machine Touch Interface **O**



Operation Panel **O**

DH-C07



Pure Black Series

Metal Narrow Frame
Tempered Glass Panel
Support 6 Floors Most
The touch button emits white light during standby orange light when touched.
Embedded Installation



Call Button

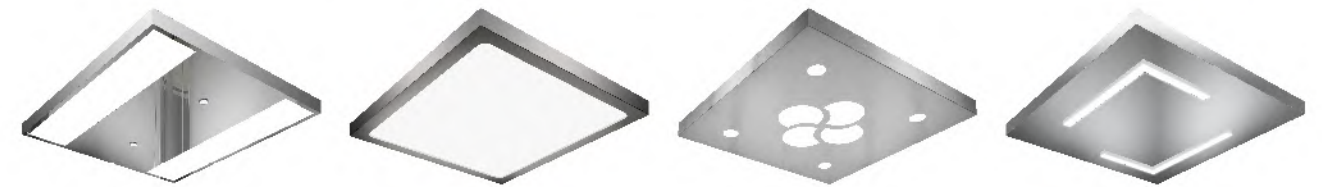
DX-005C **S** DX-006C **S** DHX-001 **O** DHX-003 **O** DHX-006 **O**



Ceiling

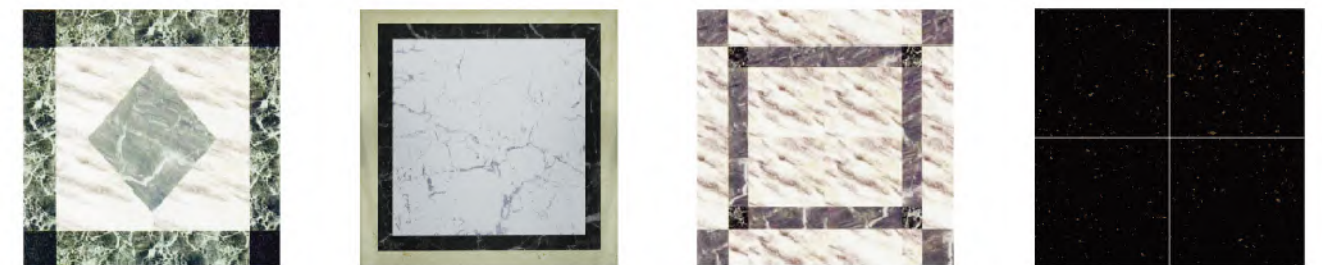
DH-D001 **O** DH-D003 **O** DH-D004 **O** DH-D005 **O**

Mirror-like Stainless Steel Transparent Acrylic Panel LED Light Source
Mirror-like Stainless Steel Transparent Acrylic Panel LED Light Source
Mirror-like Stainless Steel Transparent Acrylic Panel LED Light Source
Mirror-like Stainless Steel LED Light Source



PVC Floor

DH-F01 **S** DH-F02 **S** DH-F03 **S** DH-F04 **S**



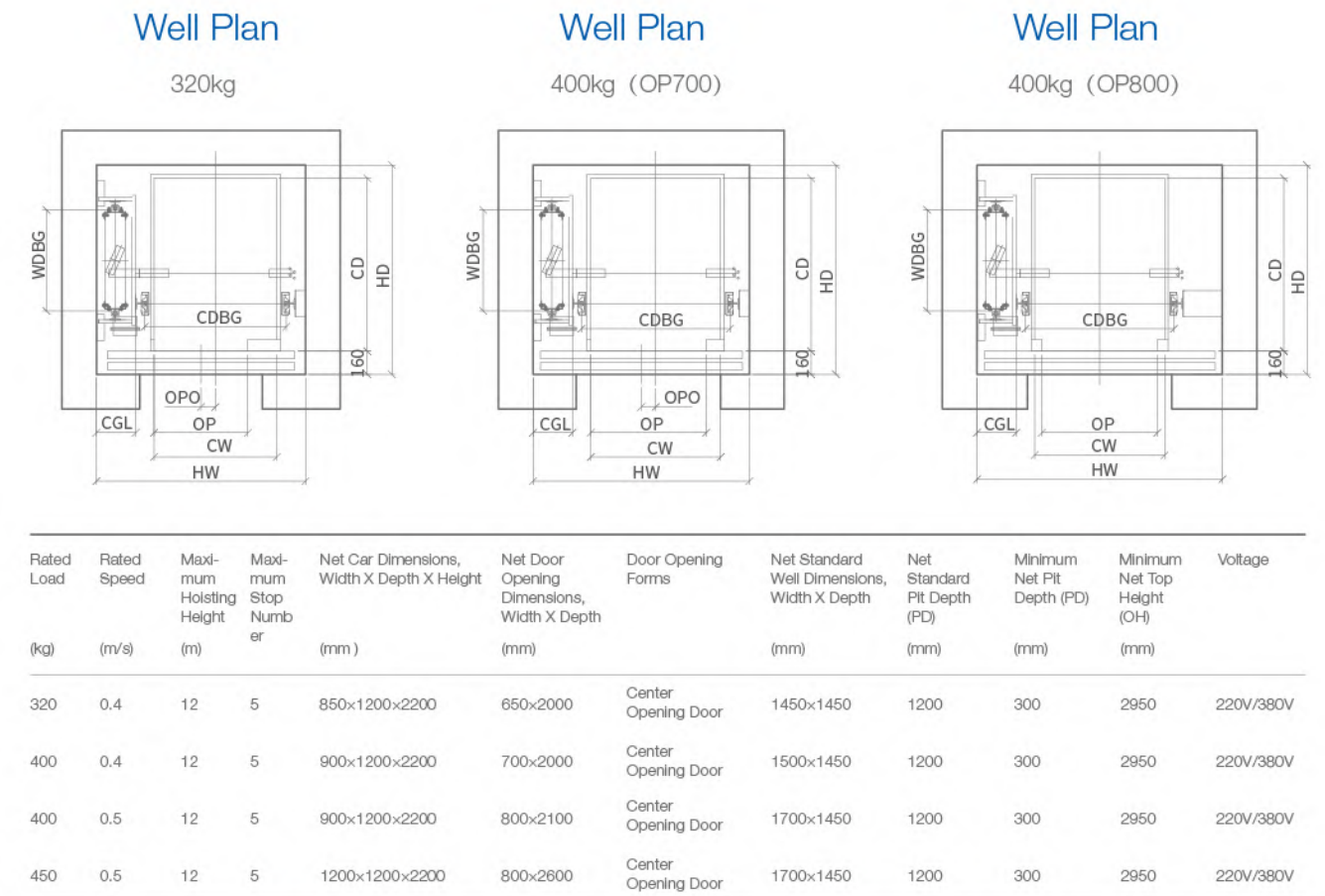
Note: the pictures are drawn by computer and may be slightly different from actual products. So, they are for your reference only.

Note: the pictures are drawn by computer and may be slightly different from actual products. So, they are for your reference only.

Aluminum Alloy Well Structure



DH2:1 Construction Parameters of Home Elevators Gantry Crane



Quality Materials and Safe Transportation

The aluminum alloy well frame structure, special technological processing, excellent load performance, high anticorrosive performance and higher heat resistance.

Surface Materials of Well Frames Available



Moonlight Silver Bright White Champagne Silver



Matt Black Rose Gold Champagne Gold

Note: subject to actual appearances and colors.

Well Frame Glass

Transparent or Frosted Glass



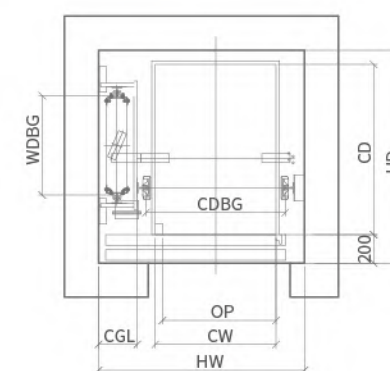
Transparent Glass



Frosted Glass

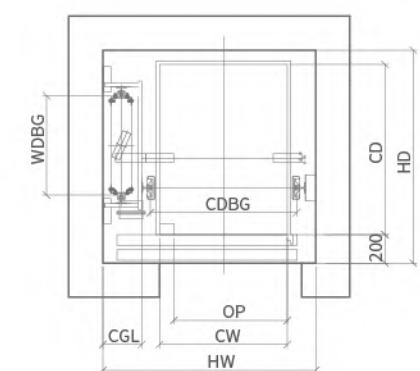
Well Plan

320kg



Well Plan

400kg/450kg



Rated Load (kg)	Rated Speed (m/s)	Maximum Hoisting Height (m)	Maximum Stop Number	Net Car Dimensions, Width X Depth X Height (mm)	Net Door Opening Dimensions, Width X Depth (mm)	Door Opening Forms	Net Standard Well Dimensions, Width X Depth (mm)	Net Standard Pit Depth (PD) (mm)	Minimum Net Pit Depth (PD) (mm)	Minimum Net Top Height (OH) (mm)	Voltage
320	0.4	12	5	850x1200x2200	800x2000	Side opening double fold	1450x1500	1200	300	2950	220V/380V
400	0.4	12	5	900x1200x2200	800x2100	Side opening double fold	1480x1500	1200	300	2950	220V/380V
400	0.5	12	5	900x1200x2200	800x2100	Side opening double fold	1700x1500	1200	300	2950	220V/380V

Note: The above dimensions are for your reference only. The specific dimensions are subject to construction drawings provided for the signing of contracts.

Freight Elevator Car Decoration

Car Decoration



DE-H001 Standard

Ceiling
Painted steel plate

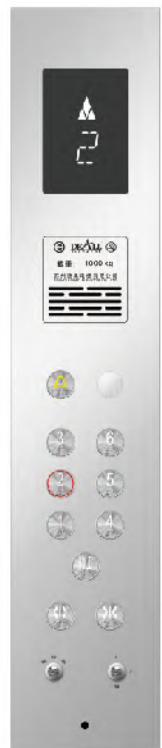
Car wall/Car door
Painted steel plate

COP/Hall calling
Hairline stainless steel

Floor
Checkered steel plate

Note: Pictures have been drawn by computer. It might be slightly different from actual colors. Please take real product as criterion.

Cop



Standard

Display LED
Panel Hairline stainless steel



DX-006C

DP-H02C

Door



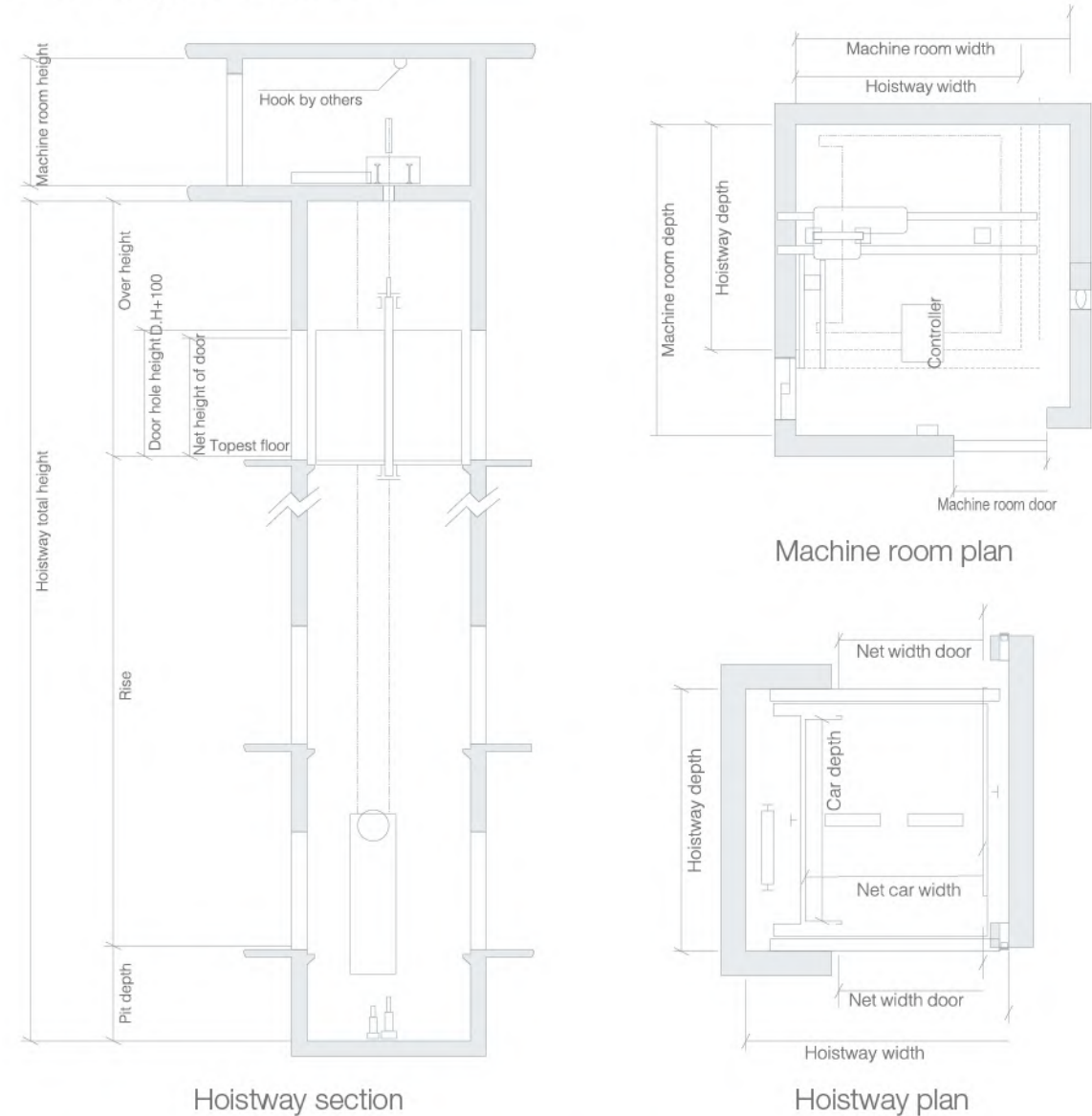
DE-HT001 Center-opening 4 panels

Landing Door Painted steel panel
Jamb Painted steel plate (narrow type)

Car control box designed in line with ergonomic design demonstrates delicate feeling, flexible movement and convenient operation; Delicate floor display can show various digital codes and symbols clearly and rapidly.

Construction parameter

DF Freight elevator



DF FREIGHT ELEVATOR CONSTRUCTION PARAMETERS

Loading capacity (kg)	Rated speed (m/s)	Door opening size (mm)	Exit and entrance	Car size WxDxH (mm)	Hoistway size WxD (mm)	Machine room size WxDxH (mm)	Top floor height (mm)	Pit depth (mm)	Max. travelling height (m)
1000	0.5	Side opening 4 panels 1400x2100	Not opposite	1400x1700x2200	2500x2200	3500x3500x2300	4200	1400	30
	Opposite		60						
1600	0.5	Side opening 4 panels 1500x2100	Not opposite	1500x2300x2200	2650x2800	3500x4000x2300	4200	1400	30
2000		Center opening 4 panels 1700x2100	Opposite	1700x2400x2200	2950x2900 2950x3000				
3000	0.25/0.5	Side opening 4 panels 2000x2100	Not opposite	1800x2300x2200	2650x2800	3400x4500x2500	4200	1400	30
4000		Opposite	2000x2800x2200	3400x3300 3400x3400					
5000	0.25/0.5	Side opening 4 panels 2200x2300	Not opposite	2200x3300x2400	3750x3800 3750x3900	3750x4500x2800	4500	1500	30
			Opposite		4000x4100 4000x4200				
			Not opposite	2400x3600x2400	4000x4100 4000x4200				
			Opposite		4000x4100 4000x4200				

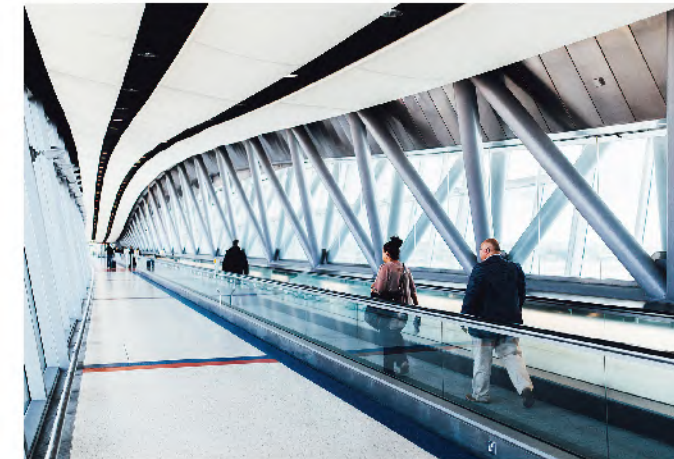
Note: Only for reference, final manufacture please follow contract.



Moving Walk Series

DEAO moving walk series products apply the industry-leading technology with characteristics of reliable performance and comfortable taking.

Streamlined design meets the aesthetic requirements. The series products are widely applied to shopping center, airport, bus station and other venues.



Escalator Series

High aspiration and uprising power
DEAO escalator series

DEAO escalator series products satisfy commercial and public transportation needs in multiple aspects in line with ergonomics and modern aesthetics. It provides security for your every lift-taking in surging crowd.

- Intelligence analysis
- Efficient and safe
- Metal trusses
- Automatic induction

○ Economy and practicality

Advanced manufacturing techniques are used to improve the product quality and extend the service life of the whole machine, thereby reducing the operating costs of customers.

○ Compact structure

Fish abdomen beam and short pedal design reduces the spatial span. Compact design of rail pre-installed technology and mechanical system and handrail drive system leads to smaller size of moving walk, thus effectively saving space.

○ Humanity details

Short-pedal surface adopts anti-slip groove design and increases friction so that escalators have a good non-slip performance; at the same time, broach boasts the extremely small tilt angle so that shopping cart can convenient access.

○ Energy-saving and endurance

The application of helical gear drive and parallel armrest drive minimizes the friction loss arising from the moving walk operation, not only saving energy while extending the service life of the whole machine.

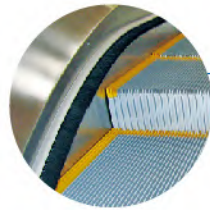
Escalator Series

Safe steady and smooth running

It adheres to the persistently rigorous design ideas. DEAO escalator / moving walk regard safe quality as the existing foundation of the enterprise. It fully considers the passengers' requirements in every detail. It provides the people with a more secure and harmonious travel environment.

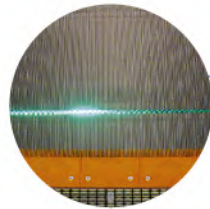
Skirt panel brush

It is a optional safety device. The brush that has been installed between the skirt panel and the step will prevent the shoes of passengers from touching the skirt panel.



Step illumination

Illumination exists in the upper and lower ends of the escalator, in the lower part of the step in order to remind the passengers of the security matters.



Emergency stop button

When the button has been pressed down, the escalator (moving walk) will be stopped for running.



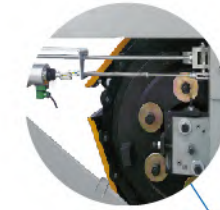
Step-chain breaking protector

When the drive-chain has been over-stretched or it is broken, the escalator (moving walk) will be automatically stopped for running.



Emergency brake device

When the electric force falls short of supply or it acts any of the safety device, the brake function goes into effect by the safety device through the spring resilience action, the escalator (moving walk) stopped for running accordingly.



Drive-chain breaking protection

When the drive-chain has been over-stretched or it is broken, the escalator (moving walk) will automatically stop for running.



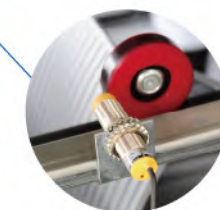
Step (tread) sunk protection device

When there is abnormal step bending, the escalator (moving walk) will be stopped for running before the step entering into the comb plate.



Step speed detector

When the handrail speed versus step is slower than certain percentage, the escalator (moving walk) will be stopped for running.





Standard & Optional Function

1 Step chain-roller inbuilt(standard)

The roller has been internally installed in the specially-designed roller step chain. It can effectively fulfill the reduction of the noise during the driving process and bring about a more smooth and quiet operation.

2 Handrail inlet(standard)

Novel, trendy and attractive design for the entrance and exit of the handrail belt makes the escalators more live and amicable.

3 Vertical type traction machine (standard)

Higher transmission effectiveness, lower noise and longer service hours.

4 Moving directions and failure display (standard)

By means of observing the digital readings on the displaying plates mounted on both sides of the skirts board at the entrance and exit of the escalator (or moving walks), the maintenance work can be made promptly and easily.

5 Illumination for the passengers (standard)

Green light softly beams out from the space between the engaged teeth of the two neighboring steps to remind the passengers to be aware of the level sections both at the entrance and exit, resulting in increased security for the passengers.

6 Emergency brake device (optional)

The skirt board illumination arranged along side the steps' arc moving contour makes the passengers feel more comfortable and safe.

7 Heating device(optional)

Each escalator usually installs three heating devices. One is beside the host in the upper machine room. It mainly heats the host. The second is installed in the mid escalator. And the third is in the lower part. It mainly heats the whole escalator.

8 Variable frequency driving-VVF (optional)

When there's no load, the escalator (or moving walk) moves at low speed and when the approach of a passenger is detected, it restores to the normal speed. This shows conspicuous energy saving effects, saving up to 40% of power.

9 Electric automatic lubrication (optional)

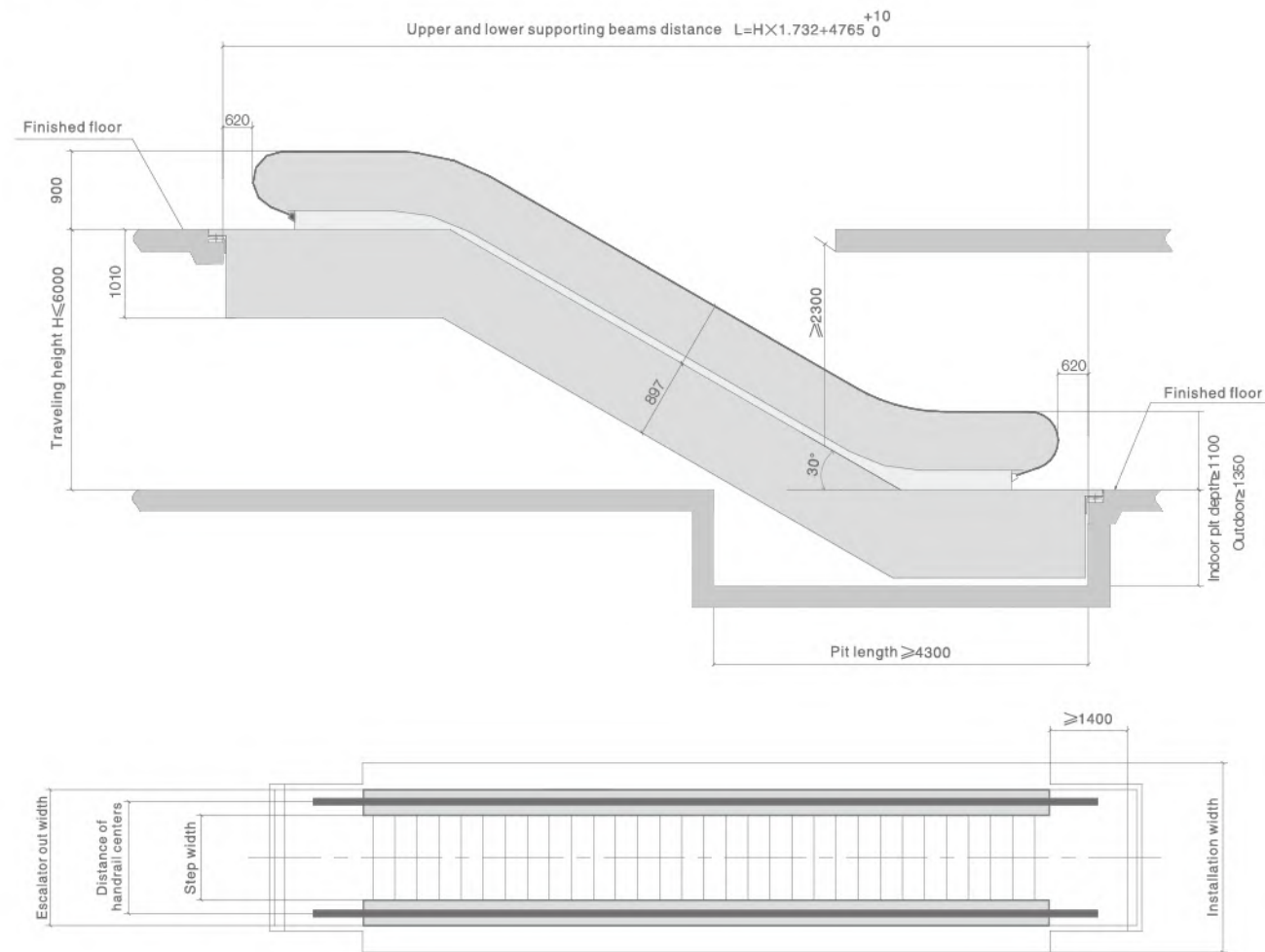
Controlled by PC, the lubricating signals are emitted after a preset period when the hydraulic pump is automatically activated to conduct the lubrication.

10 Running direction indication (optional)

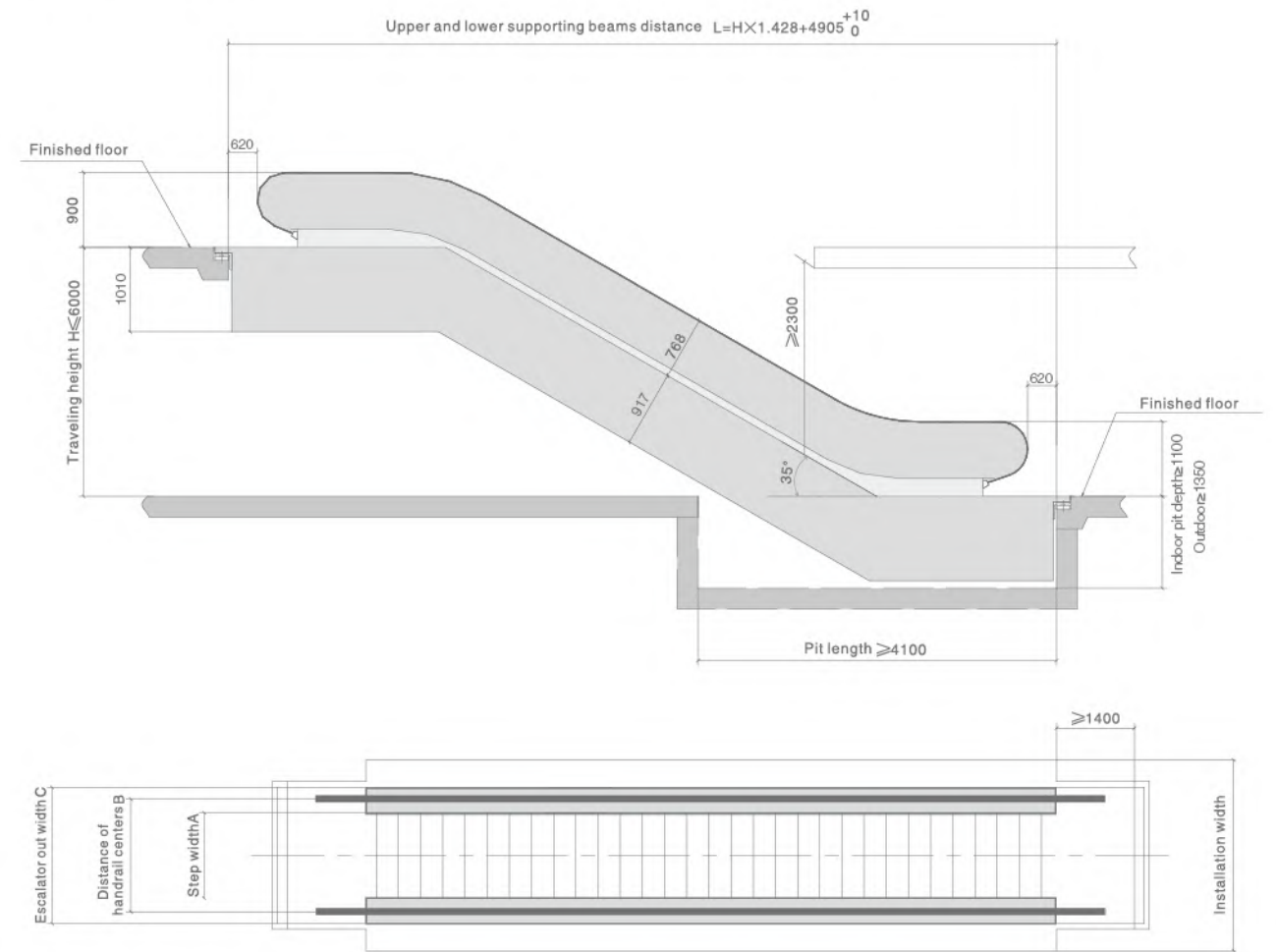
The running direction and forbidden display mark have been placed in the inlet and outlet of the handrail. The obvious running or forbidden instruction ensures the safe riding of the passengers with great ease.

Construction parameter

DE 30° Escalator



DE 35° Escalator



AODEAO ELEVATOR PRODUCT SYNTHESIS

Model	Traveling height (mm)	Nominal speed (m/s)	Maximum delivery capacity (Person/h)	Inclination	Flat step num	Motor power (kW)	A(mm)	B(mm)	C(mm)	D(mm)
DE(600/30)°	2000 < H < 4500	0.5	3600	30	2	5.5	600	838	1200	≥ 1260
	4500 < H < 5500					8				
	5500 < H < 6000					11				
DE(800/30)°	2000 < H < 3500	0.5	4800	30	2	5.5	800	1038	1400	≥ 1460
	3500 < H < 5000					8				
	5000 < H < 6000					11				
DE(1000/30)°	2000 < H < 3000	0.5	6000	30	2	5.5	1000	1238	1600	≥ 1660
	3000 < H < 4800					8				
	4800 < H < 6000					11				

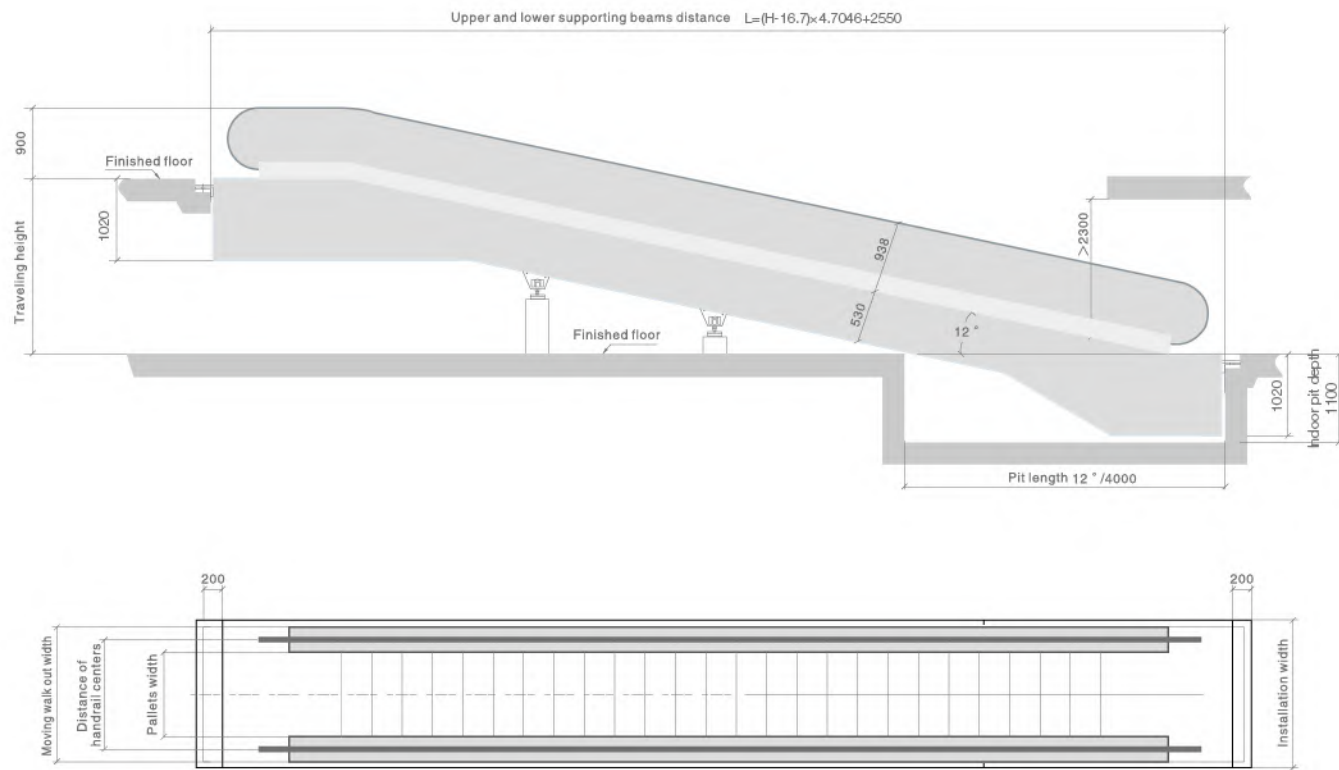
Note: only for reference, final manufacture please follow contract.
 When step width is 600mm, horizontal section of upper truss shall be lengthened 550mm.
 When step width is 800mm, horizontal section of upper truss shall be lengthened 200mm.

Model	Traveling height (mm)	Nominal speed (m/s)	Maximum delivery capacity (Person/h)	Inclination	Flat step num	Motor power (kW)	A(mm)	B(mm)	C(mm)	D(mm)
DE(600/35)°	3000 < H < 4500	0.5	3600	35	2	5.5	600	838	1200	≥ 1260
	4500 < H < 6000					8				
DE(800/35)°	3000 < H < 4000	0.5	4800	35	2	5.5	800	1038	1400	≥ 1460
	4000 < H < 5000					8				
	5000 < H < 6000					11				
DE(1000/35)°	3000 < H < 3500	0.5	6000	35	2	5.5	1000	1238	1600	≥ 1660
	3500 < H < 4500					8				
	4500 < H < 6000					11				

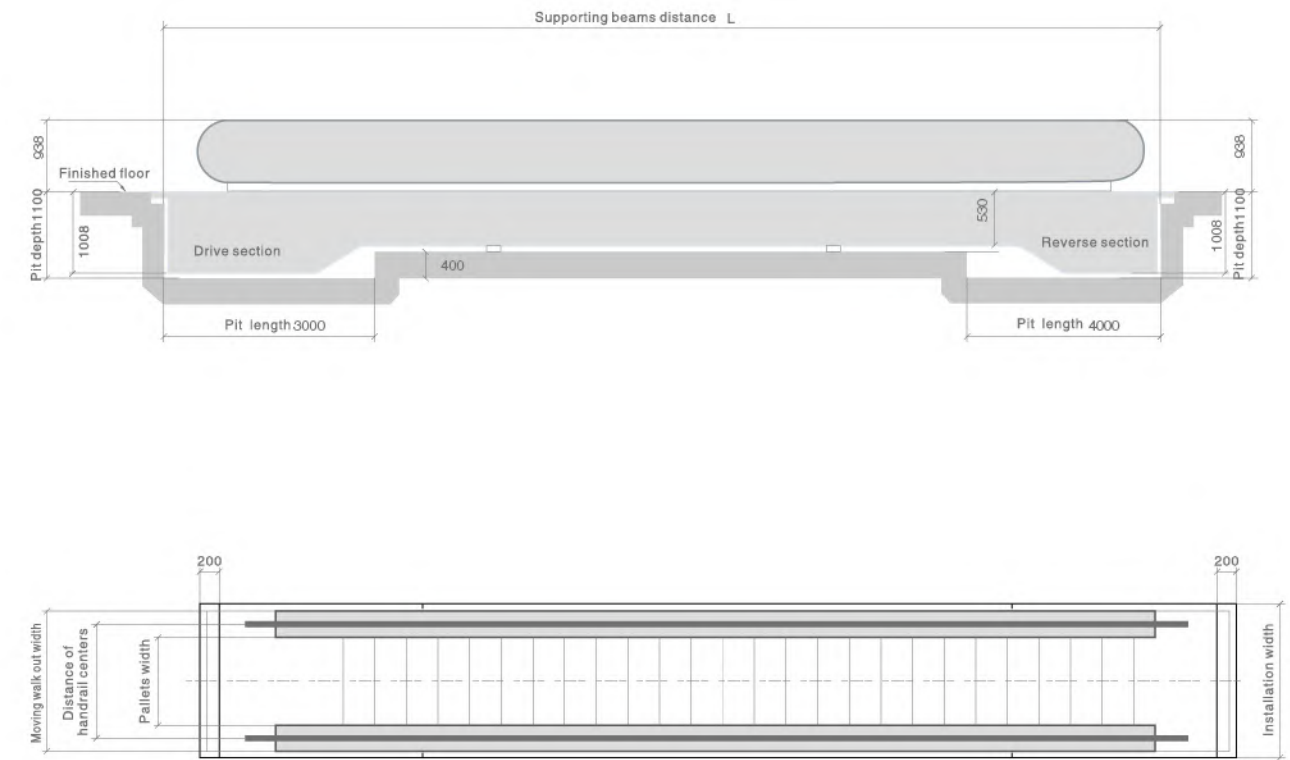
Note: only for reference, final manufacture please follow contract.
 When step width is 600mm, horizontal section of upper truss shall be lengthened 550mm.
 When step width is 800mm, horizontal section of upper truss shall be lengthened 200mm.

Construction parameter

DM 12° Moving walk



DM 0° Moving walk



Model	Traveling height (mm)	Nominal speed (m/s)	Maximum delivery capacity (Person/h)	Inclination	Motor power (kW)	A(mm)	B(mm)	C(mm)	D(mm)
DM(800/12)°	1000 < H < 3800	0.5	4800	12	8	800	1038	1400	≥ 1460
	3800 < H < 6000				11				
	6000 < H < 7600				15				
	7600 < H < 7800				2x11				
DM(1000/12)°	1000 < H < 3000	0.5	6000	12	8	1000	1238	1600	≥ 1660
	3000 < H < 4800				11				
	4800 < H < 6000				15				
	6000 < H < 6200				2x11				

Note: only for reference, final manufacture please follow contract.

Model	Delivery length (mm)	Nominal speed (m/s)	Maximum delivery capacity (Person/h)	Inclination	Motor power (kW)	A(mm)	B(mm)	C(mm)	D(mm)
DM(800/12)°	80000	0.5	4800	0	5.5	800	1038	1400	≥ 1460
	80000 < L < 130000				8				
	130000 < L < 150000				11				
DM(1000/12)°	70000	0.5	6000	0	5.5	1000	1238	1600	≥ 1660
	70000 < L < 110000				8				
	110000 < L < 150000				11				

Note: only for reference, final manufacture please follow contract.